

For Research Use Only

EGR2 Polyclonal antibody

Catalog Number: 13491-1-AP

Featured Product

21 Publications



Basic Information

Catalog Number:

13491-1-AP

Concentration:

850 ug/ml

Source:

Rabbit

Isotype:

IgG

Immunogen Catalog Number:

AG4313

GenBank Accession Number:

BC035625

GeneID (NCBI):

1959

UNIPROT ID:

P11161

Full Name:

early growth response 2 (Krox-20 homolog, Drosophila)

Calculated MW:

476 aa, 50 kDa

Observed MW:

60-70 kDa

Purification Method:

Antigen affinity purification

Recommended Dilutions:

WB 1:1000-1:8000

IHC 1:50-1:500

Applications

Tested Applications:

WB, IHC, ELISA

Cited Applications:

WB, IHC, IF

Species Specificity:

human, mouse, rat

Cited Species:

human, mouse, rat

Note-IHC: suggested antigen retrieval with TE buffer pH 9.0; (*) Alternatively, antigen retrieval may be performed with citrate buffer pH 6.0

Positive Controls:

WB : Daudi cells, mouse brain tissue, mouse kidney tissue, SH-SY5Y cells, MCF-7 cells, PC-3 cells, HepG2 cells, rat brain tissue

IHC : mouse brain tissue,

Background Information

EGR2 is also named as KROX20, belongs to the EGR C2H2-type zinc-finger protein family. As a zinc finger transcription factor, it is observed in both the somata and dendrites of central neurons (PMID: 12706208). EGR2 plays an important role in the transient formation of hindbrain developmental compartments or rhombomeres and is also an important factor in peripheral myelination, maintenance of synaptic plasticity and long-term potentiation (PMID: 7707882, 8619872, 8895453, 16203212, 18280047). Egr2 expression is induced downstream of TCR signaling in NKT precursors and Egr2 is directly connected with the key molecular checkpoints defining NKT lineage commitment and stage progression, suggesting that Egr2 not only induces the early lineage-defining transcription factor PLZF, but also controls the downstream expression of the IL-2R β chain (PMID: 22306690). Egr2 is regulated by both soluble and membrane-bound neuregulins (PMID: 16129398, 18803322, 8787758) and its concentration is partially modulated by calcium-dependent events (PMID: 19179536). Egr2/Krox20 is also required for induction of Pmp22 (PMID: 21411665), and is nuclear-localized (PMID: 12706208). On western blotting, the observed band is around 50 kDa or gives a raise around 63 kDa (PMID: 22792185). This antibody is a rabbit polyclonal antibody raised against a region of human EGR2.

Notable Publications

Author	Pubmed ID	Journal	Application
Roberta Piovesana	32933046	Int J Mol Sci	WB
Deniz Gökbuget	26466203	Nat Commun	WB
Ogawa Masahiro M	24098453	PLoS One	WB

Storage

Storage:

Store at -20°C. Stable for one year after shipment.

Storage Buffer:

PBS with 0.02% sodium azide and 50% glycerol pH 7.3.

Aliquoting is unnecessary for -20°C storage

For technical support and original validation data for this product please contact:

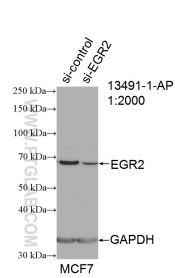
T: 4006900926

E: Proteintech-CN@ptglab.com

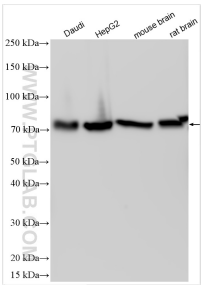
W: ptgcn.com

This product is exclusively available under Proteintech Group brand and is not available to purchase from any other manufacturer.

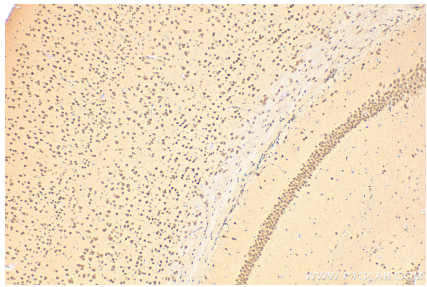
Selected Validation Data



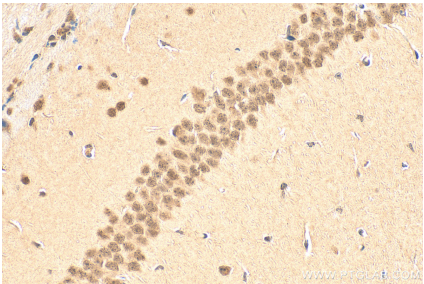
WB result of EGR2 antibody (13491-1-AP; 1:2000; incubated at room temperature for 1.5 hours) with sh-Control and sh-EGR2 transfected MCF-7 cells.



Various lysates were subjected to SDS PAGE followed by western blot with 13491-1-AP (EGR2 antibody) at dilution of 1:4000 incubated at room temperature for 1.5 hours.



Immunohistochemical analysis of paraffin-embedded mouse brain tissue slide using 13491-1-AP (EGR2 antibody) at dilution of 1:200 (under 10x lens). Heat mediated antigen retrieval with Tris-EDTA buffer (pH 9.0).



Immunohistochemical analysis of paraffin-embedded mouse brain tissue slide using 13491-1-AP (EGR2 antibody) at dilution of 1:200 (under 40x lens). Heat mediated antigen retrieval with Tris-EDTA buffer (pH 9.0).