

For Research Use Only

# MTMR4 Polyclonal antibody, PBS Only

Catalog Number: 13488-1-PBS

Featured Product



## Basic Information

Catalog Number:

13488-1-PBS

Source:

Rabbit

Isotype:

IgG

Immunogen Catalog Number:

AG4310

GenBank Accession Number:

BC035609

GeneID (NCBI):

9110

UNIPROT ID:

Q9NYA4

Full Name:

myotubularin related protein 4

Calculated MW:

1195 aa, 133 kDa

Observed MW:

133-150 kDa

Purification Method:

Antigen affinity purification

## Applications

Tested Applications:

WB, IHC, IF/ICC, Indirect ELISA

Species Specificity:

human, mouse, rat

## Background Information

Myotubularin-related protein-4 (MTMR4), also named FYVE-DSP2, is a member of the myotubularin family of phosphoinositide phosphatases that selectively degrade the 3-position phosphate from the inositol ring of PtdIns(3)P and phosphatidylinositol 3,5-bisphosphate (PtdIns(3,5)P<sub>2</sub>) (PMID: 31543504). MTMR4 knockdown markedly suppressed the motility, fusion, and fission of PI(3)P-enriched structures, resulting in decreases in late endosomes, autophagosomes, and lysosomes, and enlargement of PI(3)P-enriched early and late endosomes (PMID: 29962048).

## Storage

Storage:

Store at -80°C.

**The product is shipped with ice packs. Upon receipt, store it immediately at -80°C**

Storage Buffer:

PBS only, pH7.3

For technical support and original validation data for this product please contact:

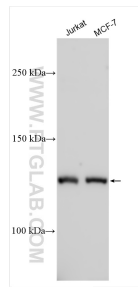
T: 4006900926

E: [Proteintech-CN@ptglab.com](mailto:Proteintech-CN@ptglab.com)

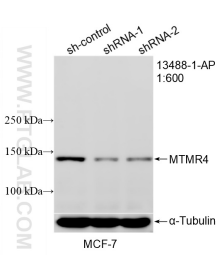
W: [ptgcn.com](http://ptgcn.com)

**This product is exclusively available under Proteintech Group brand and is not available to purchase from any other manufacturer.**

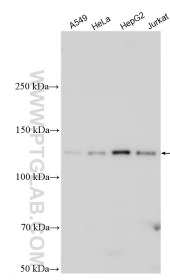
## Selected Validation Data



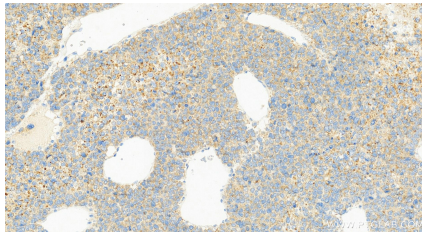
Various lysates were subjected to SDS PAGE followed by western blot with 13488-1-AP (MTMR4 antibody) at dilution of 1:2000 incubated at room temperature for 1.5 hours. This data was developed using the same antibody clone with 13488-1-PBS in a different storage buffer formulation.



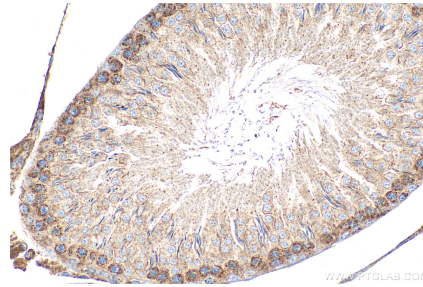
WB result of MTMR4 antibody (13488-1-AP; 1:600; incubated at room temperature for 1.5 hours) with sh-Control and sh-MTMR4 transfected MCF-7 cells. This data was developed using the same antibody clone with 13488-1-PBS in a different storage buffer formulation.



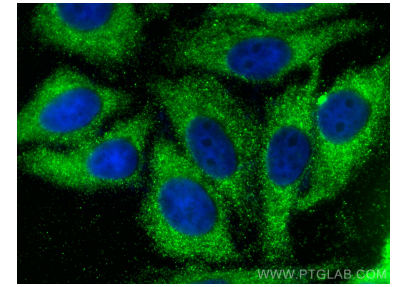
Various lysates were subjected to SDS PAGE followed by western blot with 13488-1-AP (MTMR4 antibody) at dilution of 1:1000 incubated at room temperature for 1.5 hours. This data was developed using the same antibody clone with 13488-1-PBS in a different storage buffer formulation.



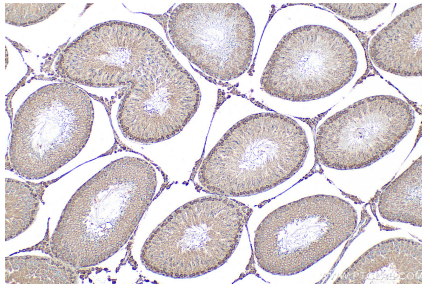
Immunohistochemical analysis of paraffin-embedded hepatocellular carcinoma tissue slide using 13488-1-AP (MTMR4 antibody) at dilution of 1:1000 (under 20x lens). Heat mediated antigen retrieval with Tris-EDTA buffer (pH 9.0). This data was developed using the same antibody clone with 13488-1-PBS in a different storage buffer formulation.



Immunohistochemical analysis of paraffin-embedded rat testis tissue slide using 13488-1-AP (MTMR4 antibody) at dilution of 1:500 (under 40x lens). Heat mediated antigen retrieval with Tris-EDTA buffer (pH 9.0). This data was developed using the same antibody clone with 13488-1-PBS in a different storage buffer formulation.



Immunofluorescent analysis of (-20°C Ethanol) fixed HepG2 cells using MTMR4 antibody (13488-1-AP) at dilution of 1:200 and CoraLite®488-Conjugated AffiniPure Goat Anti-Rabbit IgG(H+L). This data was developed using the same antibody clone with 13488-1-PBS in a different storage buffer formulation.



Immunohistochemical analysis of paraffin-embedded rat testis tissue slide using 13488-1-AP (MTMR4 antibody) at dilution of 1:500 (under 10x lens). Heat mediated antigen retrieval with Tris-EDTA buffer (pH 9.0). This data was developed using the same antibody clone with 13488-1-PBS in a different storage buffer formulation.