

For Research Use Only

MTMR4 Polyclonal antibody

Catalog Number: 13488-1-AP **1 Publications**



Basic Information

Catalog Number: 13488-1-AP	GenBank Accession Number: BC035609	Purification Method: Antigen affinity purification
Size: 650 µg/ml	GeneID (NCBI): 9110	Recommended Dilutions: WB 1:1000-1:4000 IF 1:50-1:500
Source: Rabbit	UNIPROT ID: Q9NYA4	
Isotype: IgG	Full Name: myotubularin related protein 4	
Immunogen Catalog Number: AG4310	Calculated MW: 1195 aa, 133 kDa	
	Observed MW: 133 kDa	

Applications

Tested Applications: IF/ICC, WB, ELISA	Positive Controls: WB : Jurkat cells, MCF-7 cells IF : HepG2 cells,
Cited Applications: WB	
Species Specificity: human, mouse, rat	
Cited Species: mouse	

Background Information

Myotubularin-related protein-4 (MTMR4), also named FYVE-DSP2, is a member of the myotubularin family of phosphoinositide phosphatases that selectively degrade the 3-position phosphate from the inositol ring of PtdIns(3)P and phosphatidylinositol 3,5-bisphosphate (PtdIns(3,5)P₂) (PMID: 31543504). MTMR4 knockdown markedly suppressed the motility, fusion, and fission of PI(3)P- enriched structures, resulting in decreases in late endosomes, autophagosomes, and lysosomes, and enlargement of PI(3)P- enriched early and late endosomes (PMID: 29962048).

Notable Publications

Author	Pubmed ID	Journal	Application
Dyaningtyas Dewi Pamungkas Putri	30944173	J Biol Chem	WB

Storage

Storage:
Store at -20°C. Stable for one year after shipment.
Storage Buffer:
PBS with 0.02% sodium azide and 50% glycerol pH 7.3.
Aliquoting is unnecessary for -20°C storage

For technical support and original validation data for this product please contact:

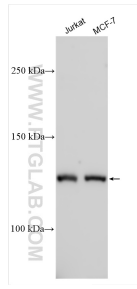
T: 4006900926

E: Proteintech-CN@ptglab.com

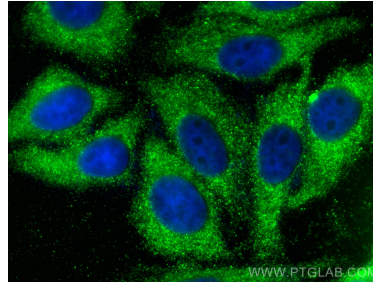
W: ptgcn.com

This product is exclusively available under Proteintech Group brand and is not available to purchase from any other manufacturer.

Selected Validation Data



Various lysates were subjected to SDS PAGE followed by western blot with 13488-1-AP (MTMR4 antibody) at dilution of 1:2000 incubated at room temperature for 1.5 hours.



Immunofluorescent analysis of (-20°C Ethanol) fixed HepG2 cells using MTMR4 antibody (13488-1-AP) at dilution of 1:200 and CoraLite® 488-Conjugated AffiniPure Goat Anti-Rabbit IgG(H+L).