

For Research Use Only

PPP2CA Polyclonal antibody

Catalog Number: 13482-1-AP

Featured Product

40 Publications



Basic Information

Catalog Number:

13482-1-AP

Source:

Rabbit

Isotype:

IgG

Immunogen Catalog Number:

AG4294

GenBank Accession Number:

BC031696

GeneID (NCBI):

5515

UNIPROT ID:

P67775

Full Name:

protein phosphatase 2 (formerly 2A), catalytic subunit, alpha isoform

Calculated MW:

309 aa, 36 kDa

Observed MW:

36 kDa

Purification Method:

Antigen affinity purification

Recommended Dilutions:

WB: 1:1000-1:4000

IP: 0.5-4.0 ug for 1.0-3.0 mg of total protein lysate

IHC: 1:50-1:500

IF/ICC: 1:50-1:500

FC (Intra): 0.20 ug per 10⁶ cells in a 100 µl suspension

Applications

Tested Applications:

WB, IHC, IF/ICC, FC (Intra), IP, ELISA

Cited Applications:

WB, IHC, IF, IP, CoIP

Species Specificity:

human, mouse, rat

Cited Species:

human, mouse, rat

Note-IHC: suggested antigen retrieval with TE buffer pH 9.0; (*) Alternatively, antigen retrieval may be performed with citrate buffer pH 6.0

Positive Controls:

WB: HEK-293T cells, human liver tissue, Jurkat cells, MCF-7 cells

IP: Jurkat cells,

IHC: mouse liver tissue, rat liver tissue

IF/ICC: MCF-7 cells,

FC (Intra): MCF-7 cells,

Background Information

PPP2CA, also named as RP-C and PP2A-alpha, belongs to the PPP phosphatase family and PP-1 subfamily. PP2A can modulate the activity of phosphorylase B kinase casein kinase 2, mitogen-stimulated S6 kinase, and MAP-2 kinase. PP2A activity was modestly decreased in AML patients harboring C-KIT/WT. PP2A is a target for C-KIT/TKD and implicated the potential efficacy of therapies targeting PP2A in such AML in future.

Notable Publications

Author	Pubmed ID	Journal	Application
Jian Guo	32989094	J Immunol	WB
Xiang Xu	34561619	Cell Res	WB, IP
Hai Zheng	33243860	Science	WB

Storage

Storage:

Store at -20°C. Stable for one year after shipment.

Storage Buffer:

PBS with 0.02% sodium azide and 50% glycerol, pH7.3

Aliquoting is unnecessary for -20°C storage

For technical support and original validation data for this product please contact:

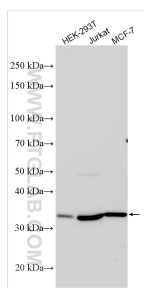
T: 4006900926

E: Proteintech-CN@ptglab.com

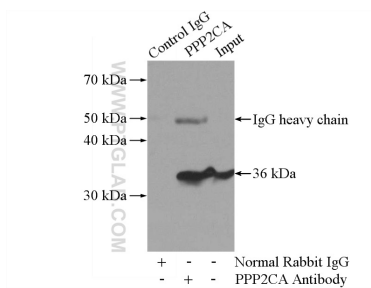
W: ptgcn.com

This product is exclusively available under Proteintech Group brand and is not available to purchase from any other manufacturer.

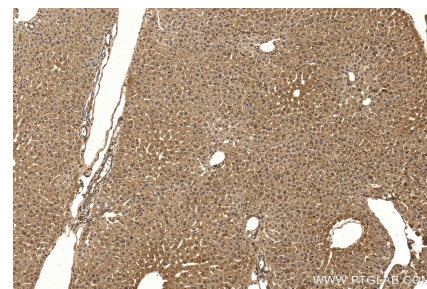
Selected Validation Data



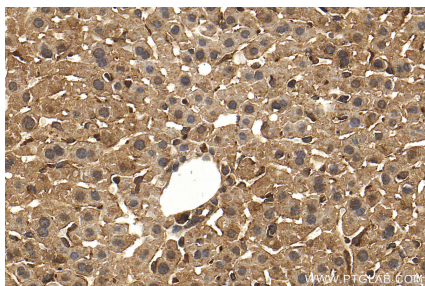
Various lysates were subjected to SDS PAGE followed by western blot with 13482-1-AP (PPP2CA antibody) at dilution of 1:2000 incubated at room temperature for 1.5 hours.



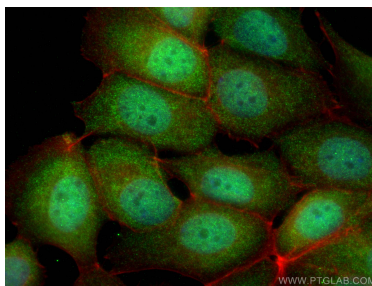
IP result of anti-PPP2CA (IP:13482-1-AP, 4ug; Detection:13482-1-AP 1:500) with Jurkat cells lysate 2400ug.



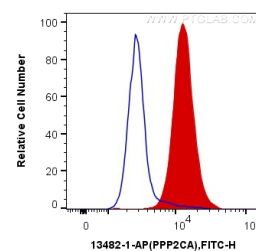
Immunohistochemical analysis of paraffin-embedded mouse liver tissue slide using 13482-1-AP (PPP2CA antibody) at dilution of 1:200 (under 10x lens). Heat mediated antigen retrieval with Tris-EDTA buffer (pH 9.0).



Immunohistochemical analysis of paraffin-embedded mouse liver tissue slide using 13482-1-AP (PPP2CA antibody) at dilution of 1:200 (under 40x lens). Heat mediated antigen retrieval with Tris-EDTA buffer (pH 9.0).



Immunofluorescent analysis of (4% PFA) fixed MCF-7 cells using PPP2CA antibody (13482-1-AP) at dilution of 1:200 and CoraLite®488-Conjugated AffiniPure Goat Anti-Rabbit IgG(H+L), CL594-phalloidin (red).



1X10⁶ MCF-7 cells were intracellularly stained with 0.2 ug Anti-Human PPP2CA (13482-1-AP) and CoraLite®488-Conjugated AffiniPure Goat Anti-Rabbit IgG(H+L) at dilution 1:1000 (red), or 0.2 ug Control Antibody. Cells were fixed and permeabilized with Transcription Factor Staining Buffer Kit (PF00011).