

SLC22A18AS Polyclonal antibody

Catalog Number: 13475-1-AP

Basic Information

Catalog Number:

13475-1-AP

Size:

200 µg/ml

Source:

Rabbit

Isotype:

IgG

Immunogen Catalog Number:

AG4274

GenBank Accession Number:

BC030237

GeneID (NCBI):

5003

UNIPROT ID:

Q8N1D0

Full Name:

solute carrier family 22 (organic cation transporter), member 18 antisense

Calculated MW:

253 aa, 27 kDa

Observed MW:

30 kDa, 65 kDa

Purification Method:

Antigen affinity purification

Recommended Dilutions:

IP 0.5-4.0 µg for 1.0-3.0 mg of total protein lysate

Applications

Tested Applications:

IP, ELISA

Species Specificity:

human

Positive Controls:

IP: HepG2 cells,

Background Information

The SLC22A18/SLC22A18AS genes are a sense-antisense pair located at human chromosome segment 11p15.5. These genes are paternally imprinted: paternal alleles are silenced and maternal alleles are expressed. SLC22A18AS (antisense) is associated to SLC22A18 (sense). These two genes share, in divergent orientations, 31 bp in their 5' regions (between the first exon of SLC22A18AS and the second exon of SLC22A18). This antibody recognizes SLC22A18AS only.

Storage

Storage:

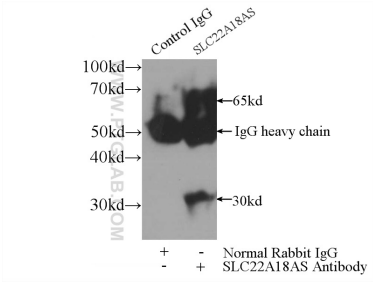
Store at -20°C. Stable for one year after shipment.

Storage Buffer:

PBS with 0.02% sodium azide and 50% glycerol pH 7.3.

Aliquoting is unnecessary for -20°C storage

Selected Validation Data



IP result of anti-SLC22A18AS (IP:13475-1-AP, 3ug;
Detection:13475-1-AP 1:300) with HepG2 cells
lysate 3600ug.