

For Research Use Only

CETP Polyclonal antibody

Catalog Number: 13459-1-AP **2 Publications**



Basic Information

Catalog Number:

13459-1-AP

Size:

260 µg/ml

Source:

Rabbit

Isotype:

IgG

Immunogen Catalog Number:

AG3923

GenBank Accession Number:

BC025739

GeneID (NCBI):

1071

UNIPROT ID:

P11597

Full Name:

cholesteryl ester transfer protein,
plasma

Calculated MW:

493 aa, 55 kDa

Observed MW:

50-70, 100 kDa

Purification Method:

Antigen affinity purification

Recommended Dilutions:

WB 1:500-1:1000

IF 1:50-1:500

Applications

Tested Applications:

IF/ICC, WB, ELISA

Cited Applications:

WB, IF, IHC

Species Specificity:

human

Cited Species:

human

Positive Controls:

WB : human brain tissue,

IF : HepG2 cells,

Background Information

Cholesteryl ester transfer protein (CETP) is a plasma glycoprotein which transfers cholesteryl esters, triglycerides, and phospholipids between lipoproteins. In plasma, CETP is mainly associated with HDL particles and catalyzes the transfer of cholesteryl esters from HDL to apolipoprotein (apo) B-containing plasma lipoproteins. Low plasma concentrations of high-density lipoprotein-cholesterol (HDL-C) have long been recognized as a major, independent cardiovascular disease (CVD) risk factor. It demonstrated that altered level of plasma CETP was associated with the increased risk of CVD (PMID: 17991755, PMID: 23477743). CETP can be detected a 70 kDa isoform by glycosylation (PMID: 3281933, PMID: 22056562). It also can be detected 100 kDa dimer (PMID: 7744792).

Notable Publications

Author	Pubmed ID	Journal	Application
Mengyang Liu	25914138	J Biol Chem	WB, IF
Zhichao Lai	38454421	J Transl Med	IHC

Storage

Storage:

Store at -20°C. Stable for one year after shipment.

Storage Buffer:

PBS with 0.02% sodium azide and 50% glycerol pH 7.3.

Aliquoting is unnecessary for -20°C storage

For technical support and original validation data for this product please contact:

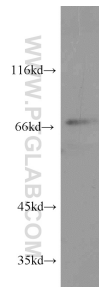
T: 4006900926

E: Proteintech-CN@ptglab.com

W: ptgcn.com

This product is exclusively available under Proteintech Group brand and is not available to purchase from any other manufacturer.

Selected Validation Data



human brain tissue were subjected to SDS PAGE followed by western blot with 13459-1-AP (CETP antibody) at dilution of 1:600 incubated at room temperature for 1.5 hours.



Immunofluorescent analysis of (-20°C Ethanol) fixed HepG2 cells using CETP antibody (13459-1-AP) at dilution of 1:200 and CoraLite®488-Conjugated AffiniPure Goat Anti-Rabbit IgG(H+L), CL594-phalloidin (red).