

For Research Use Only

BBS7 Polyclonal antibody

Catalog Number: 13458-1-AP

1 Publications



Basic Information

Catalog Number:

13458-1-AP

Size:

800 µg/ml

Source:

Rabbit

Isotype:

IgG

Immunogen Catalog Number:

AG4314

GenBank Accession Number:

BC032691

GeneID (NCBI):

55212

UNIPROT ID:

Q8IWZ6

Full Name:

Bardet-Biedl syndrome 7

Calculated MW:

715 aa, 80 kDa

Purification Method:

Antigen affinity purification

Recommended Dilutions:

IF/ICC 1:20-1:200

Applications

Tested Applications:

IF/ICC, ELISA

Cited Applications:

WB, IF

Species Specificity:

human, mouse, rat

Cited Species:

mouse

Positive Controls:

IF/ICC : hTERT-RPE1 cells,

Background Information

BBS7, also named as BBS2L1, is a component of the BBSome complex which is required for ciliogenesis but is dispensable for centriolar satellite function. BBS7 is mediated in part by the Rab8 GDP/GTP exchange factor, which localizes to the basal body and contacts the BBSome.

Notable Publications

Author	Pubmed ID	Journal	Application
Shichao Duan	33241915	EMBO J	WB,IF

Storage

Storage:

Store at -20°C. Stable for one year after shipment.

Storage Buffer:

PBS with 0.02% sodium azide and 50% glycerol pH 7.3.

Aliquoting is unnecessary for -20°C storage

For technical support and original validation data for this product please contact:

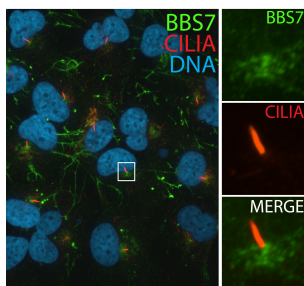
T: 4006900926

E: Proteintech-CN@ptglab.com

W: ptgcn.com

This product is exclusively available under Proteintech Group brand and is not available to purchase from any other manufacturer.

Selected Validation Data



IF result (pericentriolar staining) of anti-BBS7 (13458-1-AP, 1:50) with serum-starved hTERT-RPE1 by Dr. Moshe Kim.