

For Research Use Only

# MAPK15 Polyclonal antibody

Catalog Number: 13452-1-AP

2 Publications



## Basic Information

Catalog Number:

13452-1-AP

Concentration:

450 µg/ml

Source:

Rabbit

Isotype:

IgG

Immunogen Catalog Number:

AG4255

GenBank Accession Number:

BC028034

GeneID (NCBI):

225689

UNIPROT ID:

Q8TD08

Full Name:

mitogen-activated protein kinase 15

Calculated MW:

544 aa, 60 kDa

Observed MW:

60 kDa

Purification Method:

Antigen affinity purification

Recommended Dilutions:

WB 1:500-1:2000

IP 0.5-4.0 µg for 1.0-3.0 mg of total protein lysate

IHC 1:50-1:500

## Applications

Tested Applications:

WB, IP, IHC, ELISA

Cited Applications:

WB

Species Specificity:

human, mouse, rat

Cited Species:

human

**Note-IHC: suggested antigen retrieval with TE buffer pH 9.0; (\*) Alternatively, antigen retrieval may be performed with citrate buffer pH 6.0**

Positive Controls:

WB : mouse lung tissue,

IP : mouse lung tissue,

IHC : human kidney tissue,

## Background Information

### Notable Publications

| Author   | Pubmed ID | Journal    | Application |
|----------|-----------|------------|-------------|
| Zexin Su | 32565938  | Oncol Lett | WB          |
| Bei Zhou | 39739531  | Cell Rep   |             |

## Storage

Storage:

Store at -20°C. Stable for one year after shipment.

Storage Buffer:

PBS with 0.02% sodium azide and 50% glycerol, pH7.3

Aliquoting is unnecessary for -20°C storage

For technical support and original validation data for this product please contact:

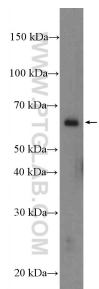
T: 4006900926

E: [Proteintech-CN@ptglab.com](mailto:Proteintech-CN@ptglab.com)

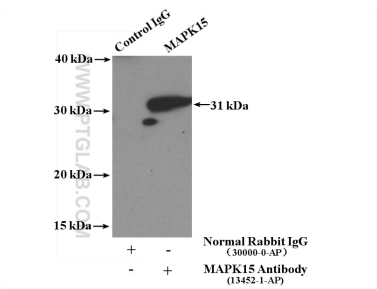
W: [ptgcn.com](http://ptgcn.com)

This product is exclusively available under Proteintech Group brand and is not available to purchase from any other manufacturer.

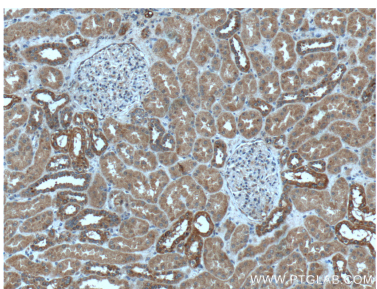
Selected Validation Data



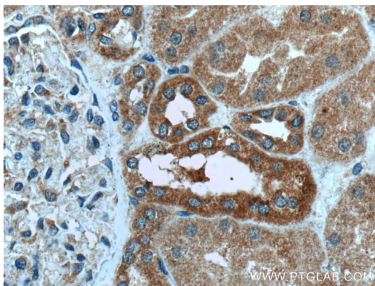
mouse lung tissue were subjected to SDS PAGE followed by western blot with 13452-1-AP (MAPK15 Antibody) at dilution of 1:1000 incubated at room temperature for 1.5 hours.



IP result of anti-MAPK15 (IP:13452-1-AP, 4ug; Detection:13452-1-AP 1:500) with mouse lung tissue lysate 3800ug.



Immunohistochemical analysis of paraffin-embedded human kidney tissue slide using 13452-1-AP (MAPK15 antibody) at dilution of 1:200 (under 10x lens).



Immunohistochemical analysis of paraffin-embedded human kidney tissue slide using 13452-1-AP (MAPK15 antibody) at dilution of 1:200 (under 40x lens).