

For Research Use Only

# MAP7 Polyclonal antibody, PBS Only

Catalog Number: 13446-1-PBS



## Basic Information

Catalog Number:

13446-1-PBS

Size:

1 mg/ml

Source:

Rabbit

Isotype:

IgG

Immunogen Catalog Number:

AG4276

GenBank Accession Number:

BC025777

GeneID (NCBI):

9053

UNIPROT ID:

Q14244

Full Name:

microtubule-associated protein 7

Calculated MW:

749 aa, 84 kDa

Observed MW:

100 kDa

Purification Method:

Antigen affinity purification

## Applications

Tested Applications:

WB, IHC, IF/ICC, IP, Indirect ELISA

Species Specificity:

human, mouse, rat

## Background Information

### Storage

Storage:

Store at -80°C.

The product is shipped with ice packs. Upon receipt, store it immediately at -80°C

Storage Buffer:

PBS Only

For technical support and original validation data for this product please contact:

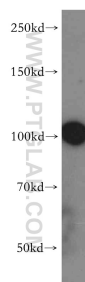
T: 4006900926

E: [Proteintech-CN@ptglab.com](mailto:Proteintech-CN@ptglab.com)

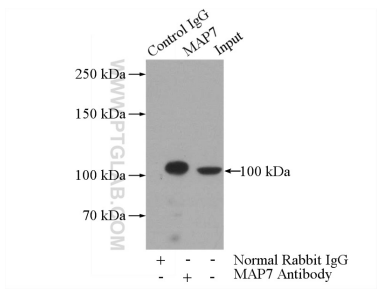
W: [ptgcn.com](http://ptgcn.com)

This product is exclusively available under Proteintech Group brand and is not available to purchase from any other manufacturer.

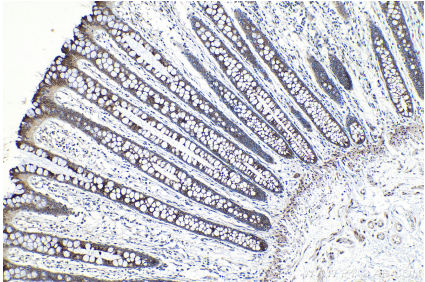
## Selected Validation Data



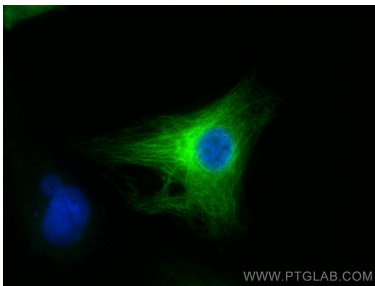
A549 cells were subjected to SDS PAGE followed by western blot with 13446-1-AP (MAP7 antibody) at dilution of 1:500 incubated at room temperature for 1.5 hours. This data was developed using the same antibody clone with 13446-1-PBS in a different storage buffer formulation.



IP result of anti-MAP7 (IP:13446-1-AP, 4ug; Detection:13446-1-AP 1:500) with HeLa cells lysate 2000ug. This data was developed using the same antibody clone with 13446-1-PBS in a different storage buffer formulation.



Immunohistochemical analysis of paraffin-embedded human colon tissue slide using 13446-1-AP (MAP7 antibody) at dilution of 1:200 (under 10x lens). Heat mediated antigen retrieval with Tris-EDTA buffer (pH 9.0). This data was developed using the same antibody clone with 13446-1-PBS in a different storage buffer formulation.



Immunofluorescent analysis of (-20°C Ethanol) fixed HeLa cells using MAP7 antibody (13446-1-AP) at dilution of 1:400 and CoraLite®488-Conjugated Goat Anti-Rabbit IgG(H+L) (SA00013-2). This data was developed using the same antibody clone with 13446-1-PBS in a different storage buffer formulation.