

For Research Use Only

# MAP7 Polyclonal antibody

Catalog Number: 13446-1-AP **3 Publications**



## Basic Information

<b>Catalog Number:</b> 13446-1-AP	<b>GenBank Accession Number:</b> BC025777	<b>Purification Method:</b> Antigen affinity purification
<b>Size:</b> 600 µg/ml	<b>GeneID (NCBI):</b> 9053	<b>Recommended Dilutions:</b> WB 1:500-1:3000
<b>Source:</b> Rabbit	<b>UNIPROT ID:</b> Q14244	IP 0.5-4.0 µg for 1.0-3.0 mg of total protein lysate
<b>Isotype:</b> IgG	<b>Full Name:</b> microtubule-associated protein 7	IHC 1:50-1:500
<b>Immunogen Catalog Number:</b> AG4276	<b>Calculated MW:</b> 749 aa, 84 kDa	IF 1:10-1:100
	<b>Observed MW:</b> 100 kDa	

## Applications

<b>Tested Applications:</b> IF/ICC, IHC, IP, WB, ELISA	<b>Positive Controls:</b> WB : A549 cells, A431 cells, HeLa cells
<b>Cited Applications:</b> WB, IF, IHC	IP : HeLa cells,
<b>Species Specificity:</b> human, mouse, rat	IHC : human colon tissue,
<b>Cited Species:</b> human	IF : HepG2 cells, HeLa cells
<b>Note-IHC: suggested antigen retrieval with TE buffer pH 9.0; (*) Alternatively, antigen retrieval may be performed with citrate buffer pH 6.0</b>	

## Background Information

### Notable Publications

Author	Pubmed ID	Journal	Application
Yin Zhao	36310139	Adv Sci (Weinh)	WB,IHC
Erin M Masucci	34705476	Mol Biol Cell	IF
Nunu Mchedlishvili	29361957	BMC Biol	IF

## Storage

**Storage:**  
Store at -20°C. Stable for one year after shipment.  
**Storage Buffer:**  
PBS with 0.02% sodium azide and 50% glycerol pH 7.3.  
Aliquoting is unnecessary for -20°C storage

For technical support and original validation data for this product please contact:

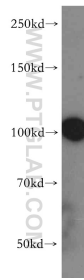
T: 4006900926

E: Proteintech-CN@ptglab.com

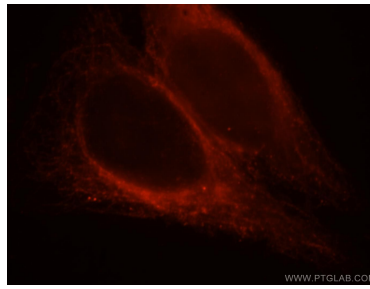
W: ptgcn.com

**This product is exclusively available under Proteintech Group brand and is not available to purchase from any other manufacturer.**

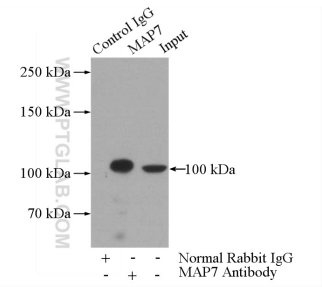
## Selected Validation Data



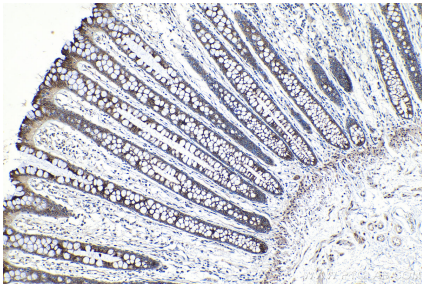
A549 cells were subjected to SDS PAGE followed by western blot with 13446-1-AP (MAP7 antibody) at dilution of 1:500 incubated at room temperature for 1.5 hours.



Immunofluorescent analysis of HepG2 cells, using MAP7 antibody 13446-1-AP at 1:25 dilution and Rhodamine-labeled goat anti-rabbit IgG (red).



IP result of anti-MAP7 (IP:13446-1-AP, 4 $\mu$ g; Detection:13446-1-AP 1:500) with HeLa cells lysate 2000 $\mu$ g.



Immunohistochemical analysis of paraffin-embedded human colon tissue slide using 13446-1-AP (MAP7 antibody) at dilution of 1:200 (under 10 $\times$  lens). Heat mediated antigen retrieval with Tris-EDTA buffer (pH 9.0).