

For Research Use Only

DVL3 Polyclonal antibody

Catalog Number: 13444-1-AP

11 Publications



Basic Information

Catalog Number:

13444-1-AP

Size:

750 µg/ml

Source:

Rabbit

Isotype:

IgG

Immunogen Catalog Number:

AG4272

GenBank Accession Number:

BC032459

GeneID (NCBI):

1857

UNIPROT ID:

Q92997

Full Name:

dishevelled, dsh homolog 3
(Drosophila)

Calculated MW:

716 aa, 78 kDa

Observed MW:

78 kDa

Purification Method:

Antigen affinity purification

Recommended Dilutions:

WB 1:2000-1:6000

IP 0.5-4.0 µg for 1.0-3.0 mg of total
protein lysate

IHC 1:500-1:2000

IF/ICC 1:50-1:500

Applications

Tested Applications:

WB, IHC, IF/ICC, IP, ELISA

Cited Applications:

WB, IHC, IF, IP

Species Specificity:

human, mouse

Cited Species:

human, mouse, xenopus

**Note-IHC: suggested antigen retrieval with
TE buffer pH 9.0; (*) Alternatively, antigen
retrieval may be performed with citrate
buffer pH 6.0**

Positive Controls:

WB: A549 cells, MCF-7 cells, Raji cells

IP: Raji cells,

IHC: human colon cancer tissue, human prostate
cancer tissue, mouse colon tissue, human cervical
cancer tissue

IF/ICC: HeLa cells,

Background Information

Notable Publications

Author	Pubmed ID	Journal	Application
Moonsup Lee	31270137	J Cell Biol	WB,IP
Kai Li	31831834	Oncogene	WB
Mengqi Zhu	36460966	Biol Proced Online	WB,IHC,IF

Storage

Storage:

Store at -20°C. Stable for one year after shipment.

Storage Buffer:

PBS with 0.02% sodium azide and 50% glycerol pH 7.3.

Aliquoting is unnecessary for -20°C storage

For technical support and original validation data for this product please contact:

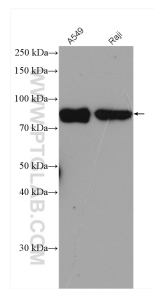
T: 4006900926

E: Proteintech-CN@ptglab.com

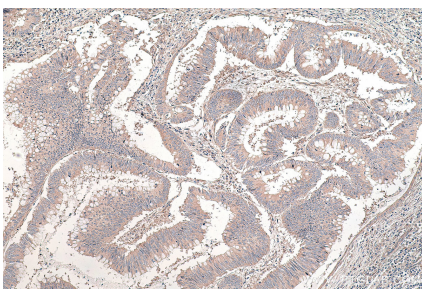
W: ptgcn.com

**This product is exclusively available under Proteintech
Group brand and is not available to purchase from any
other manufacturer.**

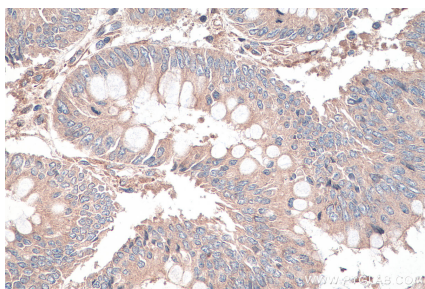
Selected Validation Data



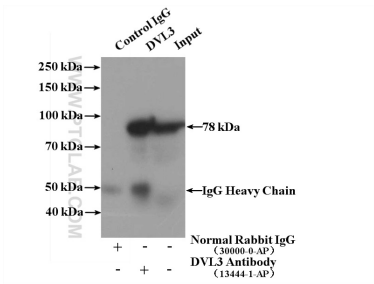
Various lysates were subjected to SDS PAGE followed by western blot with 13444-1-AP (DVL3 antibody) at dilution of 1:6000 incubated at room temperature for 1.5 hours.



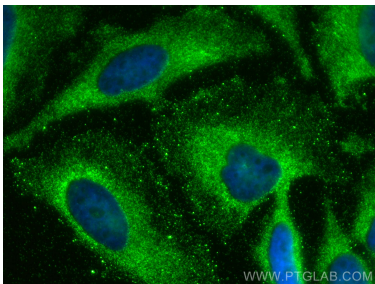
Immunohistochemical analysis of paraffin-embedded human colon cancer tissue slide using 13444-1-AP (DVL3 antibody) at dilution of 1:1000 (under 10x lens). Heat mediated antigen retrieval with Tris-EDTA buffer (pH 9.0).



Immunohistochemical analysis of paraffin-embedded human colon cancer tissue slide using 13444-1-AP (DVL3 antibody) at dilution of 1:1000 (under 40x lens). Heat mediated antigen retrieval with Tris-EDTA buffer (pH 9.0).



IP result of anti-DVL3 (IP:13444-1-AP, 4ug; Detection:13444-1-AP 1:500) with Raji cells lysate 1440ug.



Immunofluorescent analysis of (-20°C Methanol) fixed HeLa cells using DVL3 antibody (13444-1-AP) at dilution of 1:200 and CoraLite®488-Conjugated Goat Anti-Rabbit IgG(H+L).