

Twinkle/PEO1 Polyclonal antibody

Catalog Number: 13435-1-AP

7 Publications

Basic Information

Catalog Number:

13435-1-AP

Size:

400 ug/ml

Source:

Rabbit

Isotype:

IgG

Immunogen Catalog Number:

AG4239

GenBank Accession Number:

BC033762

GeneID (NCBI):

56652

UNIPROT ID:

Q96RR1

Full Name:

chromosome 10 open reading frame 2

Calculated MW:

684 aa, 77 kDa

Observed MW:

60 kDa

Purification Method:

Antigen affinity purification

Recommended Dilutions:

WB 1:500-1:2000

IHC 1:50-1:500

Applications

Tested Applications:

WB, IHC, ELISA

Cited Applications:

WB

Species Specificity:

human, mouse, rat

Cited Species:

human, mouse

Note-IHC: suggested antigen retrieval with TE buffer pH 9.0; (*) Alternatively, antigen retrieval may be performed with citrate buffer pH 6.0

Positive Controls:

WB : HeLa cells, Jurkat cells

IHC : mouse skeletal muscle tissue,

Background Information

Twinkle, also named as C10orf2, PEO1, is a 684 amino acid protein, which forms multimers in vitro, including hexamers. Twinkle colocalizes with mtDNA in mitochondrial nucleoids, a nucleoproteins complex consisting of a number of copies of proteins associated with mtDNA, probably involved in mtDNA maintenance and expression. Twinkle involves in mitochondrial DNA (mtDNA) metabolism and could function as an adenine nucleotide-dependent DNA helicase. Twinkle exists various isoform and molecular weight of isoform is 60 kDa.

Notable Publications

Author	Pubmed ID	Journal	Application
Li Shu	33665835	EMBO J	
FeiLong Meng	36039763	Nucleic Acids Res	WB
H Li	26250910	Cell Death Differ	WB

Storage

Storage:

Store at -20°C. Stable for one year after shipment.

Storage Buffer:

PBS with 0.02% sodium azide and 50% glycerol pH 7.3.

Aliquoting is unnecessary for -20°C storage

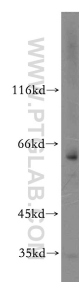
For technical support and original validation data for this product please contact:

T: 4006900926

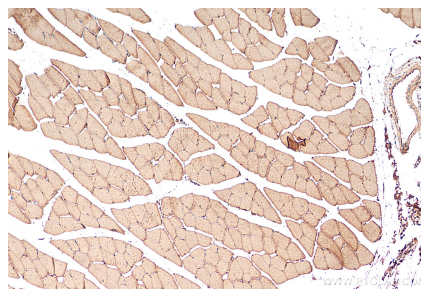
E: Proteintech-CN@ptglab.comW: ptgcn.com

This product is exclusively available under Proteintech Group brand and is not available to purchase from any other manufacturer.

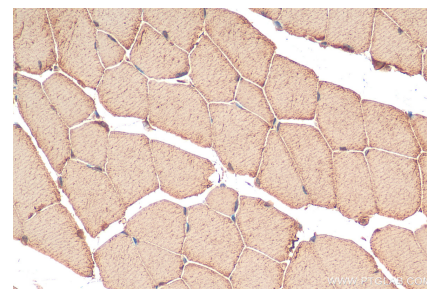
Selected Validation Data



HeLa cells were subjected to SDS PAGE followed by western blot with 13435-1-AP (Twinkle antibody) at dilution of 1:300 incubated at room temperature for 1.5 hours.



Immunohistochemical analysis of paraffin-embedded mouse skeletal muscle tissue slide using 13435-1-AP (Twinkle antibody) at dilution of 1:200 (under 10x lens). Heat mediated antigen retrieval with Tris-EDTA buffer (pH 9.0).



Immunohistochemical analysis of paraffin-embedded mouse skeletal muscle tissue slide using 13435-1-AP (Twinkle antibody) at dilution of 1:200 (under 40x lens). Heat mediated antigen retrieval with Tris-EDTA buffer (pH 9.0).