

For Research Use Only

ALS2CR8 Polyclonal antibody

Catalog Number: 13434-1-AP



Basic Information

Catalog Number:

13434-1-AP

Size:

550 µg/ml

Source:

Rabbit

Isotype:

IgG

Immunogen Catalog Number:

AG4238

GenBank Accession Number:

BC033777

GeneID (NCBI):

79800

UNIPROT ID:

Q8N187

Full Name:

amyotrophic lateral sclerosis 2
(juvenile) chromosome region,
candidate 8

Calculated MW:

725 aa, 81 kDa

Purification Method:

Antigen affinity purification

Recommended Dilutions:

IHC 1:20-1:200

Applications

Tested Applications:

IHC, ELISA

Species Specificity:

human

**Note-IHC: suggested antigen retrieval with
TE buffer pH 9.0; (*) Alternatively, antigen
retrieval may be performed with citrate
buffer pH 6.0**

Positive Controls:

IHC : human testis tissue,

Background Information

Storage

Storage:

Store at -20°C. Stable for one year after shipment.

Storage Buffer:

PBS with 0.02% sodium azide and 50% glycerol pH 7.3.

Aliquoting is unnecessary for -20°C storage

For technical support and original validation data for this product please contact:

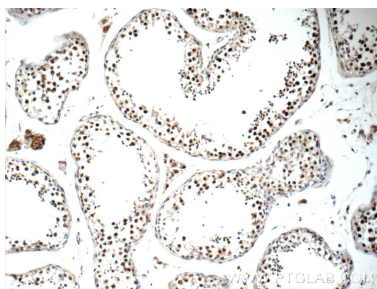
T: 4006900926

E: Proteintech-CN@ptglab.com

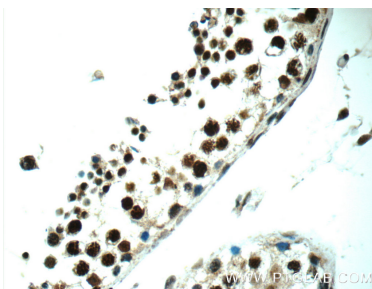
W: ptgcn.com

This product is exclusively available under Proteintech Group brand and is not available to purchase from any other manufacturer.

Selected Validation Data



Immunohistochemical analysis of paraffin-embedded human testis tissue slide using 13434-1-AP (ALS2CR8 Antibody) at dilution of 1:50 (under 10x lens).



Immunohistochemical analysis of paraffin-embedded human testis tissue slide using 13434-1-AP (ALS2CR8 Antibody) at dilution of 1:50 (under 40x lens).