

For Research Use Only

# CSRP1 Polyclonal antibody, PBS Only

Catalog Number: 13432-1-PBS



## Basic Information

<b>Catalog Number:</b> 13432-1-PBS	<b>GenBank Accession Number:</b> BC032493	<b>Purification Method:</b> Antigen affinity purification
<b>Concentration:</b> 1 mg/ml	<b>GeneID (NCBI):</b> 1465	
<b>Source:</b> Rabbit	<b>UNIPROT ID:</b> P21291	
<b>Isotype:</b> IgG	<b>Full Name:</b> cysteine and glycine-rich protein 1	
<b>Immunogen Catalog Number:</b> AG4236	<b>Calculated MW:</b> 193 aa, 21 kDa	
	<b>Observed MW:</b> 21 kDa	

## Applications

**Tested Applications:**  
WB, IHC, IP, Indirect ELISA

**Species Specificity:**  
human, mouse

## Background Information

CSRP1 (Cysteine and glycine-rich protein 1), designated initially as CRP1, constitutes a cysteine-rich protein derived from placental sources and exhibits a response profile analogous to c-myc. CSRP1 has been recognized as a tumor suppressor in several types of cancers including colorectal cancer, and cholangiocarcinoma (PMID: 37113556). Abnormal expression of CSRP1 was reported within several malignancies such as prostate cancer and acute myeloid leukemia (PMID: 38813484, 40198006).

## Storage

**Storage:**  
Store at -80°C.  
**The product is shipped with ice packs. Upon receipt, store it immediately at -80°C**

**Storage Buffer:**  
PBS only, pH7.3

For technical support and original validation data for this product please contact:

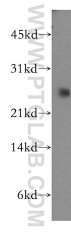
T: 4006900926

E: [Proteintech-CN@ptglab.com](mailto:Proteintech-CN@ptglab.com)

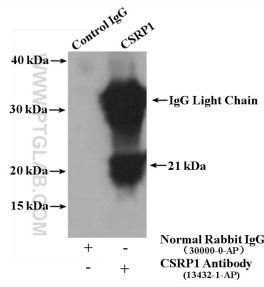
W: [ptgcn.com](http://ptgcn.com)

**This product is exclusively available under Proteintech Group brand and is not available to purchase from any other manufacturer.**

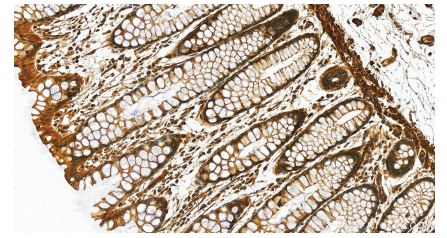
## Selected Validation Data



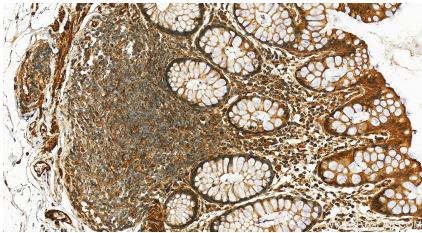
human stomach tissue were subjected to SDS PAGE followed by western blot with 13432-1-AP (CSR1 antibody) at dilution of 1:500 incubated at room temperature for 1.5 hours. This data was developed using the same antibody clone with 13432-1-PBS in a different storage buffer formulation.



mouse stomach tissue were subjected to SDS PAGE followed by western blot with 13432-1-AP (CSR1 antibody) at dilution of 1:300. This data was developed using the same antibody clone with 13432-1-PBS in a different storage buffer formulation.



Immunohistochemical analysis of paraffin-embedded human colon tissue slide using 13432-1-AP (CSR1 antibody) at dilution of 1:200 (under 20x lens). Heat mediated antigen retrieval with Tris-EDTA buffer (pH 9.0). This data was developed using the same antibody clone with 13432-1-PBS in a different storage buffer formulation.



Immunohistochemical analysis of paraffin-embedded human colon tissue slide using 13432-1-AP (CSR1 antibody) at dilution of 1:200 (under 20x lens). Heat mediated antigen retrieval with Tris-EDTA buffer (pH 9.0). This data was developed using the same antibody clone with 13432-1-PBS in a different storage buffer formulation.