

For Research Use Only

# CSRP1 Polyclonal antibody

Catalog Number: 13432-1-AP

3 Publications



## Basic Information

### Catalog Number:

13432-1-AP

### Source:

Rabbit

### Isotype:

IgG

### Immunogen Catalog Number:

AG4236

### GenBank Accession Number:

BC032493

### GeneID (NCBI):

1465

### UNIPROT ID:

P21291

### Full Name:

cysteine and glycine-rich protein 1

### Calculated MW:

193 aa, 21 kDa

### Observed MW:

21 kDa

### Purification Method:

Antigen affinity purification

### Recommended Dilutions:

WB: 1:500-1:1000

IP: 0.5-4.0 ug for 1.0-3.0 mg of total protein lysate

IHC: 1:50-1:500

## Applications

### Tested Applications:

WB, IHC, IP, ELISA

### Cited Applications:

WB, IF

### Species Specificity:

human, mouse

### Cited Species:

human, mouse, rat

**Note-IHC: suggested antigen retrieval with TE buffer pH 9.0; (\*) Alternatively, antigen retrieval may be performed with citrate buffer pH 6.0**

### Positive Controls:

WB : human stomach tissue,

IP : mouse stomach tissue,

IHC : human normal colon, human lung cancer tissue

## Background Information

CSRP1 (Cysteine and glycine-rich protein 1), designated initially as CRP1, constitutes a cysteine-rich protein derived from placental sources and exhibits a response profile analogous to c-myc. CSRP1 has been recognized as a tumor suppressor in several types of cancers including colorectal cancer, and cholangiocarcinoma (PMID: 37113556). Abnormal expression of CSRP1 was reported within several malignancies such as prostate cancer and acute myeloid leukemia (PMID: 38813484, 40198006).

## Notable Publications

Author	Pubmed ID	Journal	Application
Hui Ren	28983603	Mol Med Rep	WB
Yu-Han Lin	40198006	FASEB J	WB
Yanyan Wang	40164696	Mol Psychiatry	WB,IF

## Storage

### Storage:

Store at -20°C. Stable for one year after shipment.

### Storage Buffer:

PBS with 0.02% sodium azide and 50% glycerol, pH7.3

Aliquoting is unnecessary for -20°C storage

For technical support and original validation data for this product please contact:

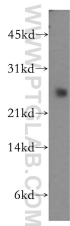
T: 4006900926

E: [Proteintech-CN@ptglab.com](mailto:Proteintech-CN@ptglab.com)

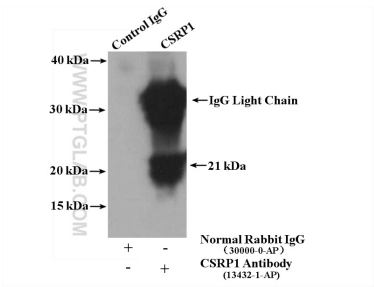
W: [ptgcn.com](http://ptgcn.com)

This product is exclusively available under Proteintech Group brand and is not available to purchase from any other manufacturer.

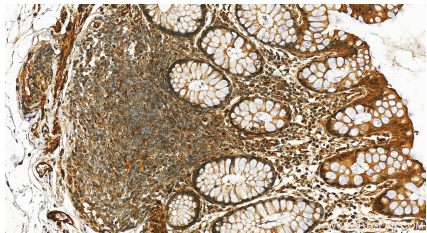
Selected Validation Data



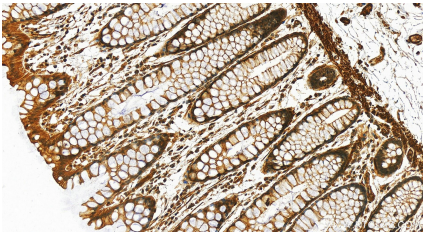
human stomach tissue were subjected to SDS PAGE followed by western blot with 13432-1-AP (CSRP1 antibody) at dilution of 1:500 incubated at room temperature for 1.5 hours.



mouse stomach tissue were subjected to SDS PAGE followed by western blot with 13432-1-AP (CSRP1 antibody) at dilution of 1:300.



Immunohistochemical analysis of paraffin-embedded human colon tissue slide using 13432-1-AP (CSRP1 antibody) at dilution of 1:200 (under 20x lens). Heat mediated antigen retrieval with Tris-EDTA buffer (pH 9.0).



Immunohistochemical analysis of paraffin-embedded human colon tissue slide using 13432-1-AP (CSRP1 antibody) at dilution of 1:200 (under 20x lens). Heat mediated antigen retrieval with Tris-EDTA buffer (pH 9.0).