

For Research Use Only

GSK3A Polyclonal antibody

Catalog Number: 13419-1-AP

6 Publications



Basic Information

Catalog Number:

13419-1-AP

Size:

1000 ug/ml

Source:

Rabbit

Isotype:

IgG

Immunogen Catalog Number:

AG4168

GenBank Accession Number:

BC027984

GeneID (NCBI):

2931

UNIPROT ID:

P49840

Full Name:

glycogen synthase kinase 3 alpha

Calculated MW:

483 aa, 51 kDa

Observed MW:

51 kDa

Purification Method:

Antigen affinity purification

Recommended Dilutions:

WB 1:2000-1:10000

IHC 1:50-1:500

IF/ICC 1:200-1:800

Applications

Tested Applications:

WB, IHC, IF/ICC, ELISA

Cited Applications:

WB

Species Specificity:

human, mouse, rat

Cited Species:

human, mouse

Note-IHC: suggested antigen retrieval with TE buffer pH 9.0; (*) Alternatively, antigen retrieval may be performed with citrate buffer pH 6.0

Positive Controls:

WB : HeLa cells, human plasma, mouse liver tissue, MCF-7 cells, PC-3 cells

IHC : human prostate cancer tissue, human lung cancer tissue, human ovary tumor tissue

IF/ICC : HeLa cells,

Background Information

GSK3A (glycogen synthase kinase 3 alpha), one of the two functional isoforms encoded by the GSK3 gene, is a serine/threonine protein kinase that is involved in cell-cycle progression, differentiation, and apoptosis (PMID: 27049759). GSK3A acts as a tumor suppressor and has important roles in acute myeloid leukemia (AML), prostate cancer, and pancreatic cancer (PMID: 22326953, 22539113, 23547054). GSK3A is also known to interact with beta-amyloid and tau, proteins that aggregate in areas of the neuronal system as part of the pathology of neurodegenerative diseases such as Alzheimer's disease (PMID: 19782073).

Notable Publications

Author	Pubmed ID	Journal	Application
Yuyu Yang	34381779	Front Cell Dev Biol	WB
Nan Song	28722108	J Cell Physiol	WB
Dong-Xue Ding	35281731	iScience	WB

Storage

Storage:

Store at -20°C. Stable for one year after shipment.

Storage Buffer:

PBS with 0.02% sodium azide and 50% glycerol pH 7.3.

Aliquoting is unnecessary for -20°C storage

For technical support and original validation data for this product please contact:

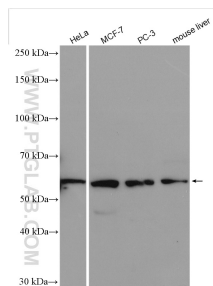
T: 4006900926

E: Proteintech-CN@ptglab.com

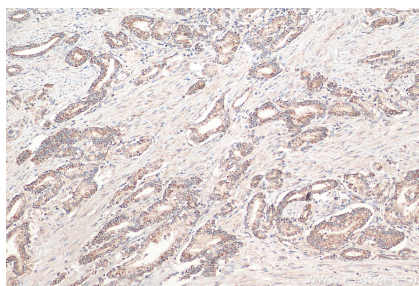
W: ptgcn.com

This product is exclusively available under Proteintech Group brand and is not available to purchase from any other manufacturer.

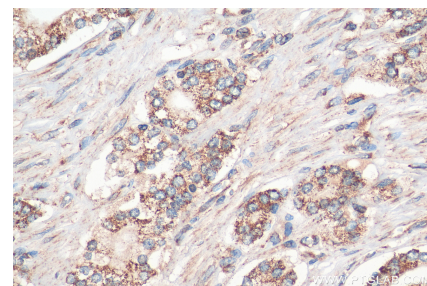
Selected Validation Data



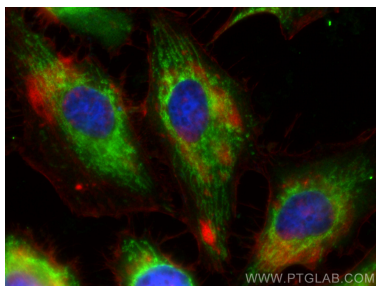
Various lysates were subjected to SDS PAGE followed by western blot with 13419-1-AP (GSK3A antibody) at dilution of 1:5000 incubated at room temperature for 1.5 hours.



Immunohistochemical analysis of paraffin-embedded human prostate cancer tissue slide using 13419-1-AP (GSK3A antibody) at dilution of 1:200 (under 10x lens). Heat mediated antigen retrieval with Tris-EDTA buffer (pH 9.0).



Immunohistochemical analysis of paraffin-embedded human prostate cancer tissue slide using 13419-1-AP (GSK3A antibody) at dilution of 1:200 (under 40x lens). Heat mediated antigen retrieval with Tris-EDTA buffer (pH 9.0).



Immunofluorescent analysis of (-20°C Ethanol) fixed HeLa cells using GSK3A antibody (13419-1-AP) at dilution of 1:400 and CoraLite®488-Conjugated AffiniPure Goat Anti-Rabbit IgG(H+L) (SA00013-2).