

For Research Use Only

# HRH1 Polyclonal antibody

Catalog Number: 13413-1-AP

Featured Product

13 Publications



## Basic Information

Catalog Number:

13413-1-AP

Concentration:

500 µg/ml

Source:

Rabbit

Isotype:

IgG

Immunogen Catalog Number:

AG4067

GenBank Accession Number:

BC060802

GeneID (NCBI):

3269

UNIPROT ID:

P35367

Full Name:

histamine receptor H1

Calculated MW:

487 aa, 56 kDa

Observed MW:

56 kDa

Purification Method:

Antigen affinity purification

Recommended Dilutions:

WB 1:500-1:1000

IHC 1:20-1:200

## Applications

Tested Applications:

WB, IHC, ELISA

Cited Applications:

WB, IHC, IF, IP

Species Specificity:

human, mouse, rat

Cited Species:

human, mouse, rat

**Note-IHC: suggested antigen retrieval with TE buffer pH 9.0; (\*) Alternatively, antigen retrieval may be performed with citrate buffer pH 6.0**

Positive Controls:

WB : human colon tissue, Jurkat cells

IHC : human endometrial cancer tissue, human colon cancer tissue, human trachea tissue

## Background Information

### Notable Publications

Author	Pubmed ID	Journal	Application
Liang Xie	32964244	Psychopharmacology (Berl)	IHC, WB
Wen-Jun Su	30483062	Front Cell Neurosci	WB
Yi-Fang Ding	35587368	Aging (Albany NY)	WB

## Storage

Storage:

Store at -20°C. Stable for one year after shipment.

Storage Buffer:

PBS with 0.02% sodium azide and 50% glycerol, pH7.3

Aliquoting is unnecessary for -20°C storage

For technical support and original validation data for this product please contact:

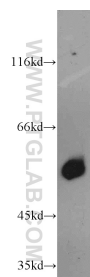
T: 4006900926

E: [Proteintech-CN@ptglab.com](mailto:Proteintech-CN@ptglab.com)

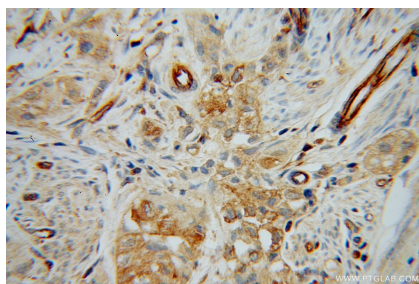
W: [ptgcn.com](http://ptgcn.com)

This product is exclusively available under Proteintech Group brand and is not available to purchase from any other manufacturer.

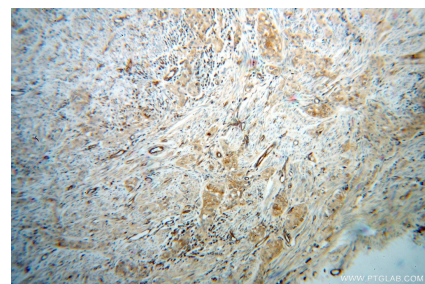
## Selected Validation Data



human colon tissue were subjected to SDS PAGE followed by western blot with 13413-1-AP (HRH1 antibody) at dilution of 1:500 incubated at room temperature for 1.5 hours.



Immunohistochemical analysis of paraffin-embedded human endometrial cancer using 13413-1-AP (HRH1 antibody) at dilution of 1:100 (under 40x lens).



Immunohistochemical analysis of paraffin-embedded human endometrial cancer using 13413-1-AP (HRH1 antibody) at dilution of 1:100 (under 10x lens).