

For Research Use Only

# TRPV6 Polyclonal antibody, PBS Only

Catalog Number:13411-1-PBS



## Basic Information

<b>Catalog Number:</b> 13411-1-PBS	<b>GenBank Accession Number:</b> BC034814	<b>Purification Method:</b> Antigen affinity purification
<b>Size:</b> 1 mg/ml	<b>GeneID (NCBI):</b> 55503	
<b>Source:</b> Rabbit	<b>UNIPROT ID:</b> Q9H1D0	
<b>Isotype:</b> IgG	<b>Full Name:</b> transient receptor potential cation channel, subfamily V, member 6	
<b>Immunogen Catalog Number:</b> AG4060	<b>Calculated MW:</b> 725 aa, 83 kDa	
	<b>Observed MW:</b> 83 kDa, 70 kDa	

## Applications

**Tested Applications:**  
WB, IF/ICC, IP, Indirect ELISA

**Species Specificity:**  
human, mouse, rat

## Background Information

TRPV6, also named as CAT1 or ECaC2, is a member of the transient receptor potential (TRP) family of membrane proteins. Unlike most TRP channels, TRPV6 and its closest relative, TRPV5, are calcium-selective channels. TRPV6 is highly expressed in the proximal intestine, placenta and exocrine tissues (PMID: 12869611). It is probably involved in calcium absorption in various tissues, including calcium reabsorption in kidney. TRPV6 is overexpressed in some cancers and exhibits oncogenic potential.

## Storage

**Storage:**  
Store at -80°C.  
**The product is shipped with ice packs. Upon receipt, store it immediately at -80°C**

**Storage Buffer:**  
PBS Only

For technical support and original validation data for this product please contact:

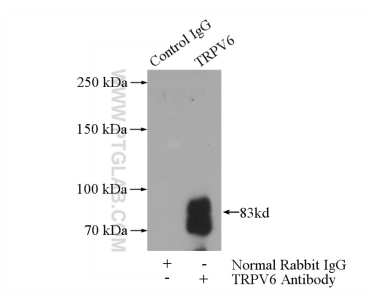
T: 4006900926

E: [Proteintech-CN@ptglab.com](mailto:Proteintech-CN@ptglab.com)

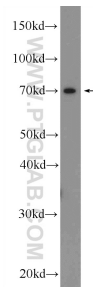
W: [ptgcn.com](http://ptgcn.com)

**This product is exclusively available under Proteintech Group brand and is not available to purchase from any other manufacturer.**

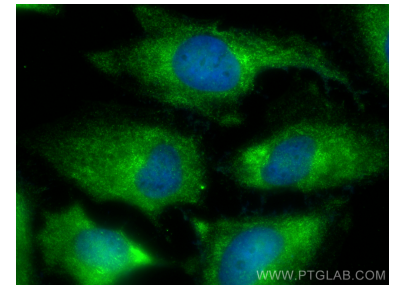
## Selected Validation Data



IP result of anti-TRPV6 (IP:13411-1-AP, 4ug; Detection:13411-1-AP 1:300) with mouse kidney tissue lysate 4000ug. This data was developed using the same antibody clone with 13411-1-PBS in a different storage buffer formulation.



human placenta tissue were subjected to SDS PAGE followed by western blot with 13411-1-AP (TRPV6 Antibody) at dilution of 1:1000 incubated at room temperature for 1.5 hours. This data was developed using the same antibody clone with 13411-1-PBS in a different storage buffer formulation.



Immunofluorescent analysis of (-20°C Ethanol) fixed HeLa cells using TRPV6 antibody (13411-1-AP) at dilution of 1:400 and CoraLite®488-Conjugated Goat Anti-Rabbit IgG(H+L) (SA00013-2). This data was developed using the same antibody clone with 13411-1-PBS in a different storage buffer formulation.