

# PDP2 Polyclonal antibody

Catalog Number: 13404-1-AP

2 Publications

## Basic Information

## Catalog Number:

13404-1-AP

## Size:

500 µg/ml

## Source:

Rabbit

## Isotype:

IgG

## Immunogen Catalog Number:

AG4257

## GenBank Accession Number:

BC028030

## GeneID (NCBI):

57546

## UNIPROT ID:

Q9P2J9

## Full Name:

pyruvate dehydrogenase phosphatase isoenzyme 2

## Calculated MW:

529 aa, 60 kDa

## Observed MW:

53 kDa

## Purification Method:

Antigen affinity purification

## Recommended Dilutions:

WB 1:500-1:2000

IHC 1:20-1:200

## Applications

## Tested Applications:

IHC, WB, ELISA

## Cited Applications:

WB

## Species Specificity:

human, mouse, rat

## Cited Species:

human, mouse

**Note-IHC: suggested antigen retrieval with TE buffer pH 9.0; (\*) Alternatively, antigen retrieval may be performed with citrate buffer pH 6.0**

## Positive Controls:

WB : mouse skeletal muscle tissue, HeLa cells, mouse kidney tissue

IHC : mouse brain tissue, human lymphoma tissue

## Background Information

PDP2, is the Ca<sup>2+</sup>-insensitive isoform of pyruvate dehydrogenase phosphatase and found in liver and adipose tissue. In adipose tissue, insulin reduces the concentration dependence of PDP2 activity for Mg<sup>2+</sup> (PMID:12676647). It catalyzes the dephosphorylation and concomitant reactivation of the mitochondrial pyruvate dehydrogenase multienzyme complex. It can be detected the mature (52 kDa) and the immature (60 kDa) bands in western blot.

## Notable Publications

Author	Pubmed ID	Journal	Application
Xiaoyu Ma	25301052	Nat Commun	WB
Wanchun Yang	33725483	Dev Cell	WB

## Storage

## Storage:

Store at -20°C. Stable for one year after shipment.

## Storage Buffer:

PBS with 0.02% sodium azide and 50% glycerol pH 7.3.

Aliquoting is unnecessary for -20°C storage

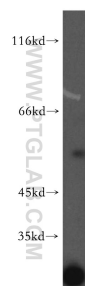
For technical support and original validation data for this product please contact:

T: 4006900926

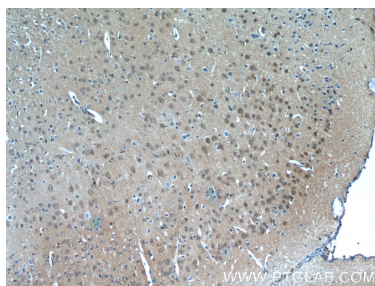
E: [Proteintech-CN@ptglab.com](mailto:Proteintech-CN@ptglab.com)W: [ptgcn.com](http://ptgcn.com)

This product is exclusively available under Proteintech Group brand and is not available to purchase from any other manufacturer.

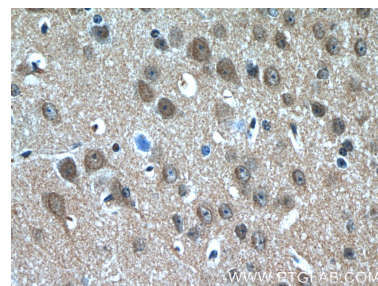
## Selected Validation Data



mouse skeletal muscle tissue were subjected to SDS PAGE followed by western blot with 13404-1-AP (PDP2 antibody) at dilution of 1:300 incubated at room temperature for 1.5 hours.



Immunohistochemical analysis of paraffin-embedded mouse brain tissue slide using 13404-1-AP (PDP2 Antibody) at dilution of 1:50 (under 10x lens).



Immunohistochemical analysis of paraffin-embedded mouse brain tissue slide using 13404-1-AP (PDP2 Antibody) at dilution of 1:50 (under 40x lens).