

For Research Use Only

CLEC1A Polyclonal antibody

Catalog Number: 13394-1-AP

2 Publications



Basic Information

Catalog Number:

13394-1-AP

Size:

800 µg/ml

Source:

Rabbit

Isotype:

IgG

Immunogen Catalog Number:

AG4058

GenBank Accession Number:

BC039072

GeneID (NCBI):

51267

UNIPROT ID:

Q8NC01

Full Name:

C-type lectin domain family 1, member A

Calculated MW:

280 aa, 32 kDa

Observed MW:

50 kDa, 32 kDa

Purification Method:

Antigen affinity purification

Recommended Dilutions:

WB 1:500-1:1000

IHC 1:50-1:500

Applications

Tested Applications:

IHC, WB, ELISA

Cited Applications:

IF

Species Specificity:

human, mouse, rat

Cited Species:

human, mouse

Note-IHC: suggested antigen retrieval with TE buffer pH 9.0; (*) Alternatively, antigen retrieval may be performed with citrate buffer pH 6.0

Positive Controls:

WB : mouse lung tissue, mouse thymus tissue, rat lung tissue

IHC : mouse lung tissue, human lung cancer tissue

Background Information

CLEC1A (C-type lectin domain family 1 member A) is a single-pass type II membrane protein that contains one C-type lectin domain. Members of the C-type lectin domain family share a common protein fold and have diverse functions, such as cell adhesion, cell-cell signalling, glycoprotein turnover, and roles in inflammation and immune response. CLEC1A is expressed preferentially in dendritic cells and plays a role in regulating dendritic cell function (PMID: 10671229).

Notable Publications

Author	Pubmed ID	Journal	Application
Guoqiang Zhu	34043748	Invest Ophthalmol Vis Sci	IF
Wei Jiang	39148004	EMBO Mol Med	

Storage

Storage:

Store at -20°C. Stable for one year after shipment.

Storage Buffer:

PBS with 0.02% sodium azide and 50% glycerol pH 7.3.

Aliquoting is unnecessary for -20°C storage

For technical support and original validation data for this product please contact:

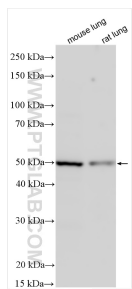
T: 4006900926

E: Proteintech-CN@ptglab.com

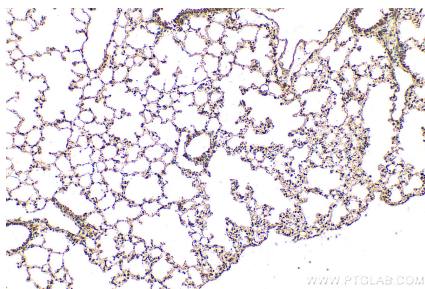
W: ptgcn.com

This product is exclusively available under Proteintech Group brand and is not available to purchase from any other manufacturer.

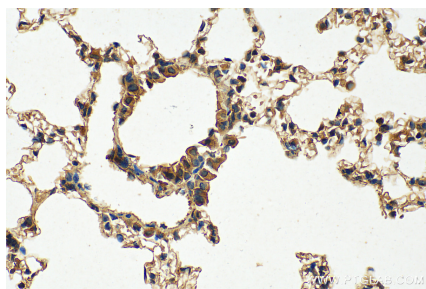
Selected Validation Data



Various lysates were subjected to SDS PAGE followed by western blot with 13394-1-AP (CLEC1A antibody) at dilution of 1:800 incubated at room temperature for 1.5 hours.



Immunohistochemical analysis of paraffin-embedded mouse lung tissue slide using 13394-1-AP (CLEC1A antibody) at dilution of 1:200 (under 10x lens). Heat mediated antigen retrieval with Tris-EDTA buffer (pH 9.0).



Immunohistochemical analysis of paraffin-embedded mouse lung tissue slide using 13394-1-AP (CLEC1A antibody) at dilution of 1:200 (under 40x lens). Heat mediated antigen retrieval with Tris-EDTA buffer (pH 9.0).