

For Research Use Only

# Galectin-4 Polyclonal antibody

Catalog Number: 13391-1-AP



## Basic Information

<b>Catalog Number:</b> 13391-1-AP	<b>GenBank Accession Number:</b> BC034750	<b>Purification Method:</b> Antigen affinity purification
<b>Size:</b> 400 µg/ml	<b>GeneID (NCBI):</b> 3960	<b>Recommended Dilutions:</b> WB 1:1000-1:5000
<b>Source:</b> Rabbit	<b>UNIPROT ID:</b> P56470	IHC 1:20-1:200
<b>Isotype:</b> IgG	<b>Full Name:</b> lectin, galactoside-binding, soluble, 4	IF 1:50-1:500
<b>Immunogen Catalog Number:</b> AG4049	<b>Calculated MW:</b> 323 aa, 36 kDa	
	<b>Observed MW:</b> 36 kDa	

## Applications

**Tested Applications:**  
FC, IF/ICC, IHC, WB, ELISA

**Species Specificity:**  
human, mouse, rat

**Note-IHC: suggested antigen retrieval with TE buffer pH 9.0; (\*) Alternatively, antigen retrieval may be performed with citrate buffer pH 6.0**

**Positive Controls:**

WB : HT-29 cells, COLO 320 cells

IHC : human breast cancer tissue,

IF : COLO 320 cells,

## Background Information

Galectins are a family of animal lectins defined by shared characteristic amino-acid sequences and affinity for  $\beta$ -galactose-containing oligosaccharides (PMID: 8063692). Galectin-4 contains two carbohydrate recognition domains (CRDs) and is expressed in the epithelium of oral mucosa, esophagus, and intestinal and colonic mucosa (PMID: 15546874; 15115909). Aberrant expression of galectin-4 has been reported in several cancers.

## Storage

**Storage:**

Store at -20°C. Stable for one year after shipment.

**Storage Buffer:**

PBS with 0.02% sodium azide and 50% glycerol pH 7.3.

Aliquoting is unnecessary for -20°C storage

For technical support and original validation data for this product please contact:

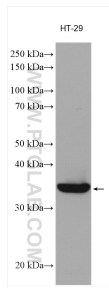
T: 4006900926

E: Proteintech-CN@ptglab.com

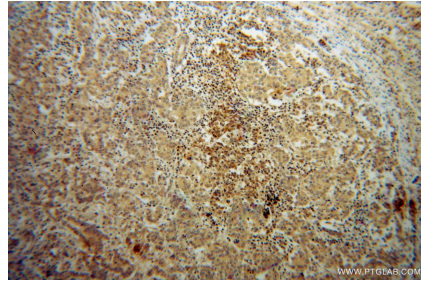
W: ptgcn.com

**This product is exclusively available under Proteintech Group brand and is not available to purchase from any other manufacturer.**

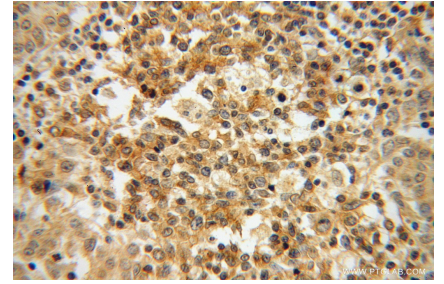
## Selected Validation Data



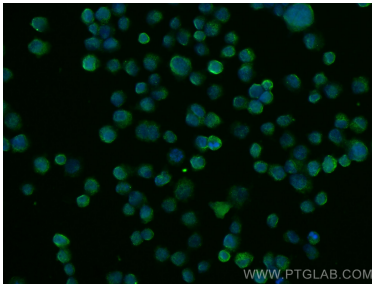
HT-29 cells were subjected to SDS PAGE followed by western blot with 13391-1-AP (Galectin-4 antibody) at dilution of 1:3000 incubated at room temperature for 1.5 hours.



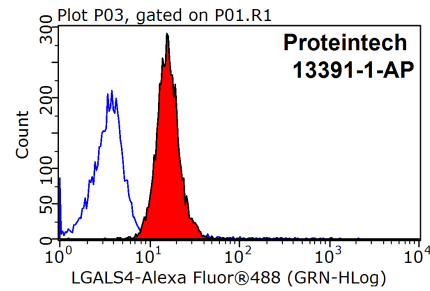
Immunohistochemical analysis of paraffin-embedded human breast cancer using 13391-1-AP (Galectin-4 antibody) at dilution of 1:50 (under 10x lens).



Immunohistochemical analysis of paraffin-embedded human breast cancer using 13391-1-AP (Galectin-4 antibody) at dilution of 1:50 (under 40x lens).



Immunofluorescent analysis of (4% PFA) fixed COLO 320 cells using Galectin-4 antibody (13391-1-AP) at dilution of 1:200 and CoraLite@488-Conjugated AffiniPure Goat Anti-Rabbit IgG(H+L).



1x10<sup>6</sup> MCF-7 cells were stained with 0.2ug Galectin-4 antibody (13391-1-AP, red) and control antibody (blue). Fixed with 90% MeOH blocked with 3% BSA (30 min). Alexa Fluor 488-conjugated AffiniPure Goat Anti-Rabbit IgG(H+L) with dilution 1:1500.