

For Research Use Only

# IHH Polyclonal antibody

Catalog Number: 13388-1-AP 10 Publications



## Basic Information

Catalog Number:

13388-1-AP

Size:

550 ug/ml

Source:

Rabbit

Isotype:

IgG

Immunogen Catalog Number:

AG4046

GenBank Accession Number:

BC034757

GeneID (NCBI):

3549

UNIPROT ID:

Q14623

Full Name:

Indian hedgehog homolog  
(Drosophila)

Calculated MW:

411 aa, 45 kDa

Observed MW:

45 kDa

Purification Method:

Antigen affinity purification

Recommended Dilutions:

WB 1:500-1:2000

IHC 1:100-1:400

## Applications

Tested Applications:

WB, IHC, ELISA

Cited Applications:

WB, IHC, IF

Species Specificity:

human

Cited Species:

human, mouse

**Note-IHC: suggested antigen retrieval with  
TE buffer pH 9.0; (\*) Alternatively, antigen  
retrieval may be performed with citrate  
buffer pH 6.0**

Positive Controls:

WB : human kidney tissue, HEK-293 cells, human heart  
tissue

IHC : human kidney tissue, human colon cancer tissue,  
human stomach cancer tissue

## Background Information

### Notable Publications

Author	Pubmed ID	Journal	Application
Guanzhi Li	36421451	Antioxidants (Basel)	IHC
Lianzheng Zhao	32479761	Dev Biol	IHC
Rongxuan Zhu	31253779	Nat Commun	WB

## Storage

Storage:

Store at -20°C. Stable for one year after shipment.

Storage Buffer:

PBS with 0.02% sodium azide and 50% glycerol pH 7.3.

Aliquoting is unnecessary for -20°C storage

For technical support and original validation data for this product please contact:

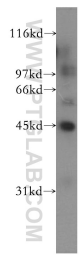
T: 4006900926

E: Proteintech-CN@ptglab.com

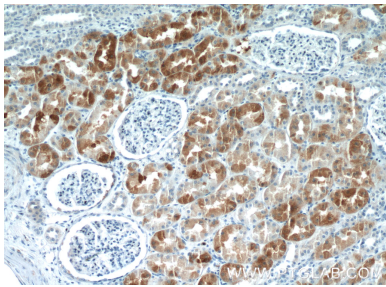
W: ptgcn.com

**This product is exclusively available under Proteintech  
Group brand and is not available to purchase from any  
other manufacturer.**

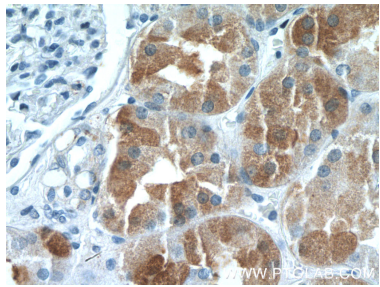
Selected Validation Data



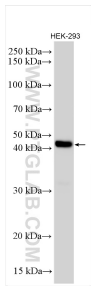
human kidney tissue were subjected to SDS PAGE followed by western blot with 13388-1-AP (IHH antibody) at dilution of 1:500 incubated at room temperature for 1.5 hours.



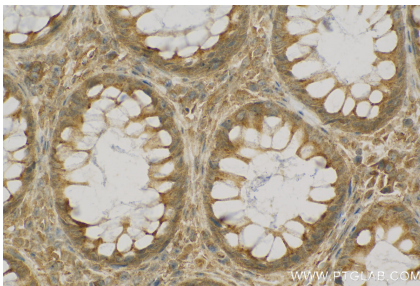
Immunohistochemical analysis of paraffin-embedded human kidney tissue slide using 13388-1-AP (IHH Antibody) at dilution of 1:200 (under 10x lens).



Immunohistochemical analysis of paraffin-embedded human kidney tissue slide using 13388-1-AP (IHH Antibody) at dilution of 1:200 (under 40x lens).



Various lysates were subjected to SDS PAGE followed by western blot with 13388-1-AP (IHH antibody) at dilution of 1:3000 incubated at room temperature for 1.5 hours.



Immunohistochemical analysis of paraffin-embedded Colorectal cancer slide using 13388-1-AP (IHH antibody) at dilution of 1:200 (under 40x lens). Heat mediated antigen retrieval with Tris-EDTA buffer (pH 9.0).