

For Research Use Only

# NCAPD2 Polyclonal antibody, PBS Only

Catalog Number: 13382-1-PBS

Featured Product



## Basic Information

**Catalog Number:**

13382-1-PBS

**Size:**

1 mg/ml

**Source:**

Rabbit

**Isotype:**

IgG

**Immunogen Catalog Number:**

AG4219

**GenBank Accession Number:**

BC028182

**GeneID (NCBI):**

9918

**UNIPROT ID:**

Q15021

**Full Name:**

non-SMC condensin I complex,  
subunit D2

**Calculated MW:**

1401 aa, 157 kDa

**Observed MW:**

157 kDa

**Purification Method:**

Antigen affinity purification

## Applications

**Tested Applications:**

WB, IHC, IF/ICC, IP, Indirect ELISA

**Species Specificity:**

human, mouse, rat

## Background Information

NCAPD2 is a regulatory subunit of the condensin complex, which is required for conversion of interphase chromatin into mitotic-like condense chromosomes. Condensin complexes are heteropentamers comprised of two SMC (structural maintenance of chromosomes) subunits and three non-SMC subunits. The C-terminus of NCAPD2 interacts with Histones H1 and H3 through their histone tails. A loss of NCAPD2 can lead to the disorganization of chromatid axes, misalignment of sister chromatids during metaphase and delayed entry into anaphase.

## Storage

**Storage:**

Store at -80°C.

The product is shipped with ice packs. Upon receipt, store it immediately at -80°C

**Storage Buffer:**

PBS Only

For technical support and original validation data for this product please contact:

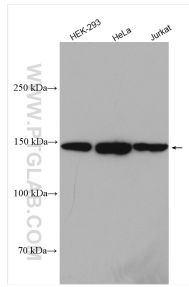
T: 4006900926

E: [Proteintech-CN@ptglab.com](mailto:Proteintech-CN@ptglab.com)

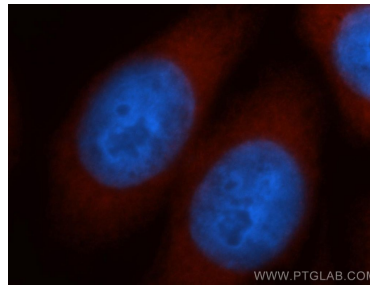
W: [ptgcn.com](http://ptgcn.com)

This product is exclusively available under Proteintech Group brand and is not available to purchase from any other manufacturer.

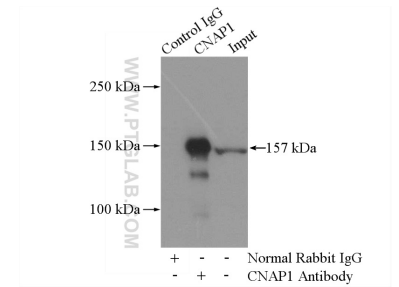
## Selected Validation Data



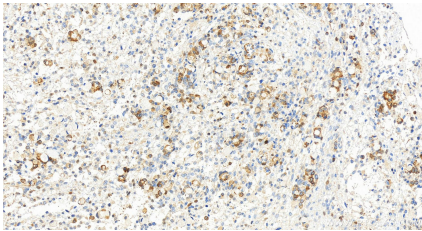
HEK-293 cells were subjected to SDS PAGE followed by western blot with 13382-1-AP (NCAPD2 antibody) at dilution of 1:1500 incubated at room temperature for 1.5 hours. This data was developed using the same antibody clone with 13382-1-PBS in a different storage buffer formulation.



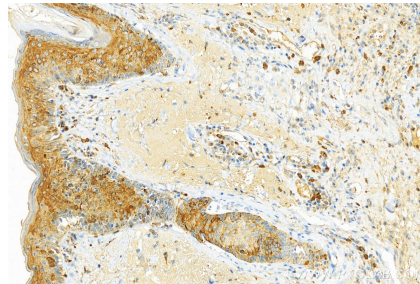
Immunofluorescent analysis of HeLa cells, using NCAPD2 antibody 13382-1-AP at 1:50 dilution and Rhodamine-labeled goat anti-rabbit IgG (red). Blue pseudocolor = DAPI (fluorescent DNA dye). This data was developed using the same antibody clone with 13382-1-PBS in a different storage buffer formulation.



IP result of anti-NCAPD2 (IP:13382-1-AP, 4ug; Detection:13382-1-AP 1:600) with HEK-293 cells lysate 2800ug. This data was developed using the same antibody clone with 13382-1-PBS in a different storage buffer formulation.



Immunohistochemical analysis of paraffin-embedded human ovary cancer tissue slide using 13382-1-AP (NCAPD2 antibody) at dilution of 1:400 (under 20x lens). Heat mediated antigen retrieval with Tris-EDTA buffer (pH 9.0). This data was developed using the same antibody clone with 13382-1-PBS in a different storage buffer formulation.



Immunohistochemical analysis of paraffin-embedded skin cancer slide using 13382-1-AP (NCAPD2 antibody) at dilution of 1:300 (under 20x lens). Heat mediated antigen retrieval with Tris-EDTA buffer (pH 9.0). This data was developed using the same antibody clone with 13382-1-PBS in a different storage buffer formulation.