

For Research Use Only

# GLRX2 Polyclonal antibody

Catalog Number: 13381-1-AP

Featured Product

5 Publications



## Basic Information

**Catalog Number:**

13381-1-AP

**Size:**

1000 µg/ml

**Source:**

Rabbit

**Isotype:**

IgG

**Immunogen Catalog Number:**

AG4218

**GenBank Accession Number:**

BC028113

**GeneID (NCBI):**

51022

**UNIPROT ID:**

Q9NS18

**Full Name:**

glutaredoxin 2

**Calculated MW:**

164 aa, 18 kDa

**Observed MW:**

16 kDa

**Purification Method:**

Antigen affinity purification

**Recommended Dilutions:**

WB 1:500-1:2000

IF 1:200-1:800

## Applications

**Tested Applications:**

IF/ICC, WB, ELISA

**Cited Applications:**

WB

**Species Specificity:**

human, mouse, rat

**Cited Species:**

human, mouse

**Positive Controls:**

WB : HGC-27 cells, MCF-7 cells

IF : MCF-7 cells,

## Background Information

GLRX2 (Glutaredoxin-2) is also named as GRX2 and belongs to the glutaredoxin family. It facilitates the maintenance of cellular redox homeostasis upon treatment with apoptotic agents, thereby preventing cardiolipin oxidation and cytochrome C release. The GLRX2, which exists in a dynamic equilibrium of enzymatically active monomers and quiescent dimers, is a 16-kDa protein directed either to the nucleus or to the mitochondria through differential splicing of the first exon (PMID: 17121859). It has 2 isoforms produced by alternative splicing.

## Notable Publications

Author	Pubmed ID	Journal	Application
Yasuko Manabe	25205643	J Physiol Sci	WB
Meiling Wu	33794310	Free Radic Biol Med	WB
Jian Wen	32522629	Brain Res	WB

## Storage

**Storage:**

Store at -20°C. Stable for one year after shipment.

**Storage Buffer:**

PBS with 0.02% sodium azide and 50% glycerol pH 7.3.

Aliquoting is unnecessary for -20°C storage

For technical support and original validation data for this product please contact:

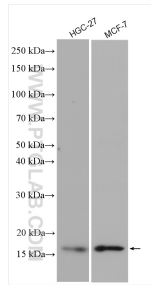
T: 4006900926

E: Proteintech-CN@ptglab.com

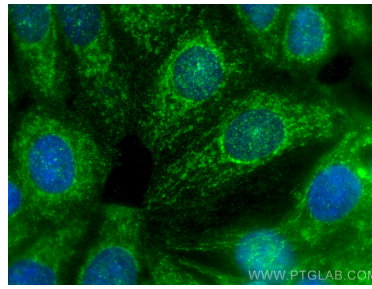
W: ptgcn.com

**This product is exclusively available under Proteintech Group brand and is not available to purchase from any other manufacturer.**

## Selected Validation Data



Various lysates were subjected to SDS PAGE followed by western blot with 13381-1-AP (GLRX2 antibody) at dilution of 1:1000 incubated at room temperature for 1.5 hours.



Immunofluorescent analysis of (4% PFA) fixed MCF-7 cells using GLRX2 antibody (13381-1-AP) at dilution of 1:400 and CoraLite®488-Conjugated AffiniPure Goat Anti-Rabbit IgG(H+L).