

For Research Use Only

SCFD2 Polyclonal antibody

Catalog Number: 13375-1-AP



Basic Information

Catalog Number:

13375-1-AP

Size:

240 µg/ml

Source:

Rabbit

Isotype:

IgG

Immunogen Catalog Number:

AG4197

GenBank Accession Number:

BC032453

GeneID (NCBI):

152579

UNIPROT ID:

Q8WU76

Full Name:

sec1 family domain containing 2

Calculated MW:

684 aa, 75 kDa

Observed MW:

75 kDa

Purification Method:

Antigen affinity purification

Recommended Dilutions:

WB 1:500-1:1000

IP 0.5-4.0 µg for 1.0-3.0 mg of total protein lysate

IHC 1:20-1:200

Applications

Tested Applications:

IHC, IP, WB, ELISA

Species Specificity:

human, mouse, rat

Note-IHC: suggested antigen retrieval with TE buffer pH 9.0; (*) Alternatively, antigen retrieval may be performed with citrate buffer pH 6.0

Positive Controls:

WB : COLO 320 cells, mouse kidney tissue

IP : COLO 320 cells,

IHC : human colon cancer tissue, human colon tissue

Background Information

Storage

Storage:

Store at -20°C. Stable for one year after shipment.

Storage Buffer:

PBS with 0.02% sodium azide and 50% glycerol pH 7.3.

Aliquoting is unnecessary for -20°C storage

For technical support and original validation data for this product please contact:

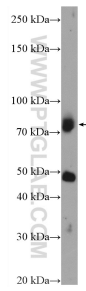
T: 4006900926

E: Proteintech-CN@ptglab.com

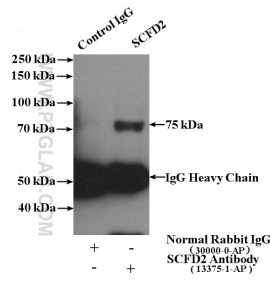
W: ptgcn.com

This product is exclusively available under Proteintech Group brand and is not available to purchase from any other manufacturer.

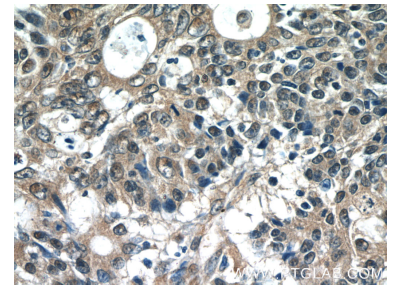
Selected Validation Data



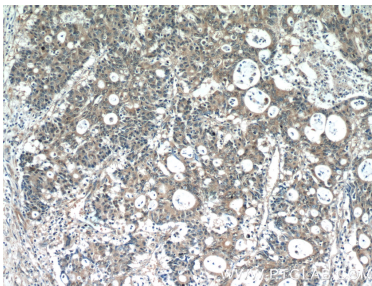
COLO 320 cells were subjected to SDS PAGE followed by western blot with 13375-1-AP (SCFD2 antibody) at dilution of 1:600 incubated at room temperature for 1.5 hours.



IP result of anti-SCFD2 (IP:13375-1-AP, 4ug; Detection:13375-1-AP 1:200) with COLO 320 cells lysate 3200ug.



Immunohistochemical analysis of paraffin-embedded human colon cancer tissue slide using 13375-1-AP (SCFD2 Antibody) at dilution of 1:50 (under 40x lens).



Immunohistochemical analysis of paraffin-embedded human colon cancer tissue slide using 13375-1-AP (SCFD2 Antibody) at dilution of 1:50 (under 10x lens).