

For Research Use Only

PTGR1 Polyclonal antibody

Catalog Number: 13374-1-AP

3 Publications



Basic Information

Catalog Number:

13374-1-AP

Size:

600 µg/ml

Source:

Rabbit

Isotype:

IgG

Immunogen Catalog Number:

AG4196

GenBank Accession Number:

BC035228

GeneID (NCBI):

22949

UNIPROT ID:

Q14914

Full Name:

prostaglandin reductase 1

Calculated MW:

329 aa, 36 kDa

Observed MW:

36 kDa

Purification Method:

Antigen affinity purification

Recommended Dilutions:

WB 1:1000-1:6000

IP 0.5-4.0 µg for 1.0-3.0 mg of total protein lysate

Applications

Tested Applications:

WB, IP, ELISA

Cited Applications:

WB

Species Specificity:

human, mouse, rat

Cited Species:

human

Positive Controls:

WB : HeLa cells, human colon tissue, human liver tissue, mouse liver tissue, HepG2 cells, rat liver tissue

IP : HepG2 cells,

Background Information

PTGR1(Prostaglandin reductase 1) is also named as LTB₄DH(NADP-dependent leukotriene B₄ 12-hydroxydehydrogenase) and belongs to the NADP-dependent oxidoreductase L4BD family. It catalyses the conversion of leukotriene B₄ into biologically less reactive 12-oxo-leukotriene B₄, a key step for its inactivation and it is a key oxidation step in the process of metabolic inactivation of leukotriene B₄ in various non-leukocyte tissues(PMID:8576264).

Notable Publications

Author	Pubmed ID	Journal	Application
Yuan Wang	39309426	Int J Biol Sci	WB
Diana Restifo	37552607	Mol Cancer Ther	WB
Vitturi Dario A DA	23878198	J Biol Chem	WB

Storage

Storage:

Store at -20°C. Stable for one year after shipment.

Storage Buffer:

PBS with 0.02% sodium azide and 50% glycerol pH 7.3.

Aliquoting is unnecessary for -20°C storage

For technical support and original validation data for this product please contact:

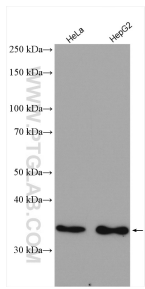
T: 4006900926

E: Proteintech-CN@ptglab.com

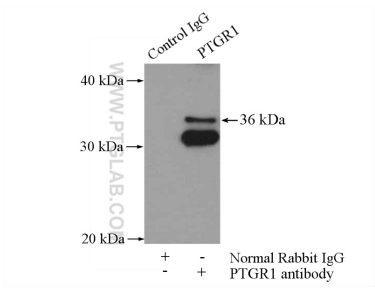
W: ptgcn.com

This product is exclusively available under Proteintech Group brand and is not available to purchase from any other manufacturer.

Selected Validation Data



Various lysates were subjected to SDS PAGE followed by western blot with 13374-1-AP (PTGR1 antibody) at dilution of 1:3000 incubated at room temperature for 1.5 hours.



IP result of anti-PTGR1 (IP:13374-1-AP, 4ug; Detection:13374-1-AP 1:500) with HepG2 cells lysate 3200ug.