

For Research Use Only

# Glycerokinase Polyclonal antibody

Catalog Number: 13360-1-AP **8 Publications**



## Basic Information

**Catalog Number:**

13360-1-AP

**Size:**

1000 µg/ml

**Source:**

Rabbit

**Isotype:**

IgG

**Immunogen Catalog Number:**

AG4175

**GenBank Accession Number:**

BC037549

**GeneID (NCBI):**

2710

**UNIPROT ID:**

P32189

**Full Name:**

glycerol kinase

**Calculated MW:**

524 aa, 57 kDa

**Observed MW:**

60-65 kDa

**Purification Method:**

Antigen affinity purification

**Recommended Dilutions:**

WB 1:500-1:2000

IP 0.5-4.0 µg for 1.0-3.0 mg of total protein lysate

IF 1:10-1:100

## Applications

**Tested Applications:**

IF/ICC, IP, WB, ELISA

**Cited Applications:**

WB, IF, RIP, IHC

**Species Specificity:**

human, mouse, rat

**Cited Species:**

human, mouse, pig

**Positive Controls:**

WB : HepG2 cells, mouse kidney tissue, mouse liver tissue, mouse testis tissue

IP : HepG2 cells,

IF : HepG2 cells,

## Background Information

### Notable Publications

Author	Pubmed ID	Journal	Application
Ni Zeng	28960355	J Appl Toxicol	WB
Mari J Aaltonen	34785538	Life Sci Alliance	WB
Hongshuo Zhang	35499042	J Adv Res	IHC

## Storage

**Storage:**

Store at -20°C. Stable for one year after shipment.

**Storage Buffer:**

PBS with 0.02% sodium azide and 50% glycerol pH 7.3.

Aliquoting is unnecessary for -20°C storage

For technical support and original validation data for this product please contact:

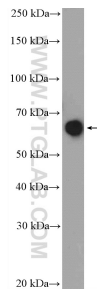
T: 4006900926

E: Proteintech-CN@ptglab.com

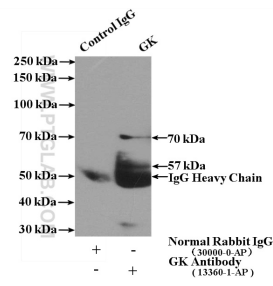
W: ptgcn.com

**This product is exclusively available under Proteintech Group brand and is not available to purchase from any other manufacturer.**

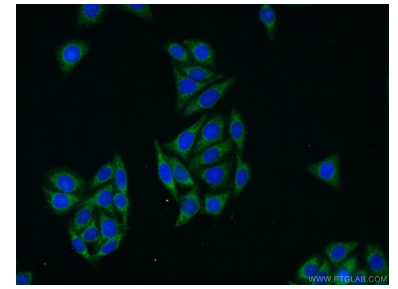
## Selected Validation Data



HepG2 cells were subjected to SDS PAGE followed by western blot with 13360-1-AP (Glycerokinase antibody at dilution of 1:1000 incubated at room temperature for 1.5 hours.



IP result of anti-Glycerokinase (IP:13360-1-AP, 4ug; Detection:13360-1-AP 1:1000) with HepG2 cells lysate 4000ug.



Immunofluorescent analysis of HepG2 cells using 13360-1-AP (Glycerokinase antibody) at dilution of 1:25 and Alexa Fluor 488-conjugated AffiniPure Goat Anti-Rabbit IgG(H+L).