

For Research Use Only

# RAD17 Polyclonal antibody, PBS Only

Catalog Number: 13358-1-PBS

Featured Product



## Basic Information

Catalog Number:

13358-1-PBS

Size:

1 mg/ml

Source:

Rabbit

Isotype:

IgG

Immunogen Catalog Number:

AG4171

GenBank Accession Number:

BC032304

GeneID (NCBI):

5884

UNIPROT ID:

O75943

Full Name:

RAD17 homolog (S. pombe)

Calculated MW:

681 aa, 71 kDa

Observed MW:

71 kDa

Purification Method:

Antigen affinity purification

## Applications

Tested Applications:

WB, IHC, IF/ICC, FC (Intra), Indirect ELISA

Species Specificity:

human

## Background Information

### Storage

Storage:

Store at -80°C.

The product is shipped with ice packs. Upon receipt, store it immediately at -80°C

Storage Buffer:

PBS Only

For technical support and original validation data for this product please contact:

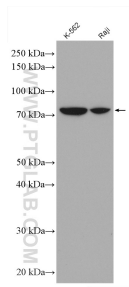
T: 4006900926

E: [Proteintech-CN@ptglab.com](mailto:Proteintech-CN@ptglab.com)

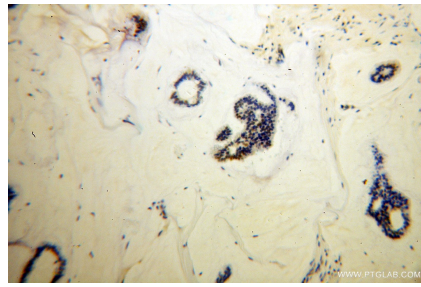
W: [ptgcn.com](http://ptgcn.com)

This product is exclusively available under Proteintech Group brand and is not available to purchase from any other manufacturer.

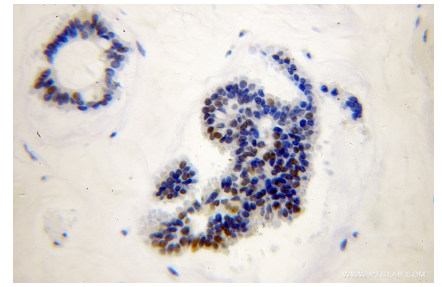
## Selected Validation Data



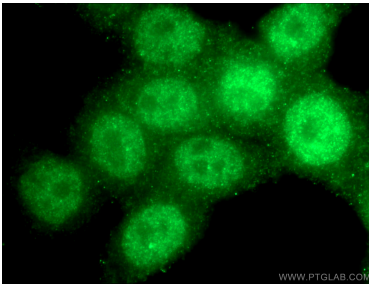
Various lysates were subjected to SDS PAGE followed by western blot with 13358-1-AP (RAD17 antibody) at dilution of 1:3000 incubated at room temperature for 1.5 hours. This data was developed using the same antibody clone with 13358-1-PBS in a different storage buffer formulation.



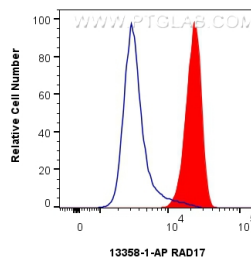
Immunohistochemical analysis of paraffin-embedded human breast cancer using 13358-1-AP (RAD17 antibody) at dilution of 1:100 (under 10x lens). This data was developed using the same antibody clone with 13358-1-PBS in a different storage buffer formulation.



Immunohistochemical analysis of paraffin-embedded human breast cancer using 13358-1-AP (RAD17 antibody) at dilution of 1:100 (under 40x lens). This data was developed using the same antibody clone with 13358-1-PBS in a different storage buffer formulation.



Immunofluorescent analysis of (4% PFA) fixed HeLa cells using 13358-1-AP (RAD17 antibody) at dilution of 1:50 and Alexa Fluor 488-conjugated AffiniPure Goat Anti-Rabbit IgG(H+L). This data was developed using the same antibody clone with 13358-1-PBS in a different storage buffer formulation.



$1 \times 10^6$  A431 cells were intracellularly stained with 0.25  $\mu$ g RAD17 Polyclonal antibody (13358-1-AP) and CoraLite® 488-Conjugated Goat Anti-Rabbit IgG(H+L) (SA00013-2)(red), or 0.25  $\mu$ g Rabbit IgG control Rabbit PolyAb (30000-0-AP) (blue). Cells were fixed and permeabilized with Transcription Factor Staining Buffer Kit (PF00011). This data was developed using the same antibody clone with 13358-1-PBS in a different storage buffer formulation.