

For Research Use Only

# KIR3DL1 Polyclonal antibody

Catalog Number: 13335-1-AP **1 Publications**



## Basic Information

**Catalog Number:**

13335-1-AP

**Size:**

350 µg/ml

**Source:**

Rabbit

**Isotype:**

IgG

**Immunogen Catalog Number:**

AG4152

**GenBank Accession Number:**

BC028206

**GeneID (NCBI):**

3811

**UNIPROT ID:**

P43629

**Full Name:**

killer cell immunoglobulin-like receptor, three domains, long cytoplasmic tail, 1

**Calculated MW:**

444 aa, 49 kDa

**Observed MW:**

49 kDa

**Purification Method:**

Antigen affinity purification

**Recommended Dilutions:**

WB 1:500-1:1000

## Applications

**Tested Applications:**

FC, WB, ELISA

**Species Specificity:**

human

**Positive Controls:**

WB: human liver tissue,

## Background Information

Killer cell immunoglobulin-like receptors (KIRs) are transmembrane glycoproteins expressed by natural killer cells and subsets of T cells. The KIR proteins are classified by the number of extracellular immunoglobulin domains (2D or 3D) and by whether they have a long (L) or short (S) cytoplasmic domain. KIR3DL1 is a receptor on natural killer (NK) cells for HLA Bw4 allele. It inhibits the activity of NK cells thus preventing cell lysis. KIR3DL1 and KIR3DS1 are highly homologous. This antibody is raised against 22-344 amino acids of human KIR3DL1 and recognizes both KIR3DL1 (49 kDa) and KIR3DS1 (43 kDa).

## Notable Publications

Author	Pubmed ID	Journal	Application
Akihiro Doi	30421793	Clin Exp Immunol	

## Storage

**Storage:**

Store at -20°C. Stable for one year after shipment.

**Storage Buffer:**

PBS with 0.02% sodium azide and 50% glycerol pH 7.3.

Aliquoting is unnecessary for -20°C storage

For technical support and original validation data for this product please contact:

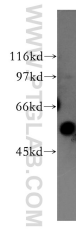
T: 4006900926

E: Proteintech-CN@ptglab.com

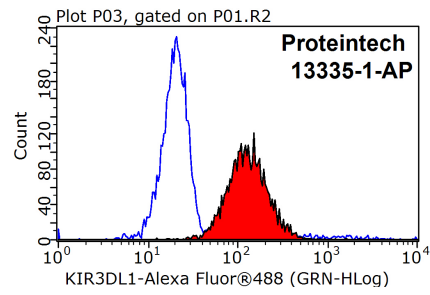
W: ptgcn.com

**This product is exclusively available under Proteintech Group brand and is not available to purchase from any other manufacturer.**

## Selected Validation Data



human liver tissue were subjected to SDS PAGE followed by western blot with 13335-1-AP (KIR3DL1 antibody) at dilution of 1:500 incubated at room temperature for 1.5 hours.



$1 \times 10^6$  Jurkat cells were stained with 0.2ug KIR3DL1 antibody (13335-1-AP, red) and control antibody (blue). Fixed with 90% MeOH blocked with 3% BSA (30 min). Alexa Fluor 488-conjugated AffiniPure Goat Anti-Rabbit IgG(H+L) with dilution 1:1000.