

CSDE1 Polyclonal antibody

Catalog Number: 13319-1-AP

Featured Product

4 Publications

Basic Information

Catalog Number:

13319-1-AP

Size:

500 µg/ml

Source:

Rabbit

Isotype:

IgG

Immunogen Catalog Number:

AG4173

GenBank Accession Number:

BC032446

GeneID (NCBI):

7812

UNIPROT ID:

O75534

Full Name:

cold shock domain containing E1,

RNA-binding

Calculated MW:

798 aa, 89 kDa

Observed MW:

89 kDa

Purification Method:

Antigen affinity purification

Recommended Dilutions:

WB 1:2000-1:14000

IHC 1:50-1:500

IF 1:50-1:500

Applications

Tested Applications:

IF/ICC, IHC, WB, ELISA

Cited Applications:

WB

Species Specificity:

human, mouse

Cited Species:

human, mouse

Note-IHC: suggested antigen retrieval with TE buffer pH 9.0; (*) Alternatively, antigen retrieval may be performed with citrate buffer pH 6.0

Positive Controls:

WB : A431 cells, HEK-293 cells, HeLa cells

IHC : human liver cancer tissue,

IF : HeLa cells,

Background Information

CSDE1 (Cold shock domain-containing protein E1), also known as UNR (upstream of N-ras), is an RNA-binding protein involved in the regulation of messenger RNA stability and internal initiation of translation. It is required for internal initiation of translation of human rhinovirus RNA. UNR may be involved in translationally coupled mRNA turnover. Reduced expression of UNR impairs proliferation and differentiation of erythroid blasts. Recent study found that UNR acts as a positive or negative regulator of cell death, depending on the cell type, suggesting manipulation of UNR level may constitute a specific approach to sensitize cancer cells to anticancer treatments.

Notable Publications

Author	Pubmed ID	Journal	Application
Joel I Perez-Perri	30352994	Nat Commun	WB
Joel I Perez-Perri	33208978	Nat Protoc	WB
Nedal Taha	36016420	Viruses	WB

Storage

Storage:

Store at -20°C. Stable for one year after shipment.

Storage Buffer:

PBS with 0.02% sodium azide and 50% glycerol pH 7.3.

Aliquoting is unnecessary for -20°C storage

For technical support and original validation data for this product please contact:

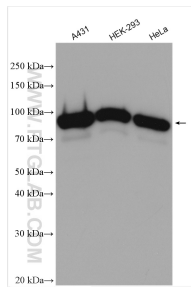
T: 4006900926

E: Proteintech-CN@ptglab.com

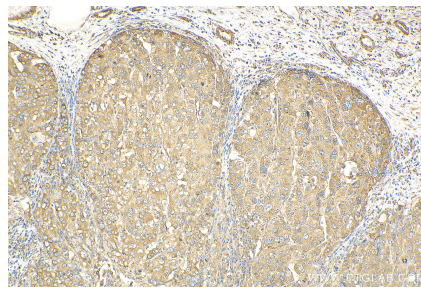
W: ptgcn.com

This product is exclusively available under Proteintech Group brand and is not available to purchase from any other manufacturer.

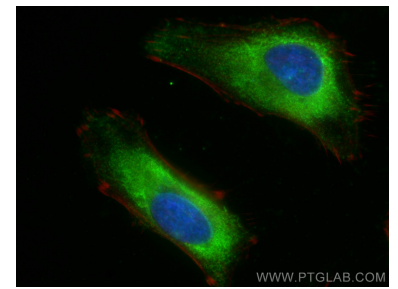
Selected Validation Data



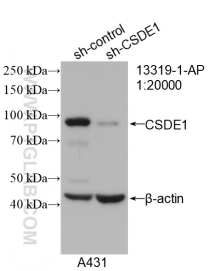
Various lysates were subjected to SDS PAGE followed by western blot with 13319-1-AP (CSDE1 antibody) at dilution of 1:7000 incubated at room temperature for 1.5 hours.



Immunohistochemical analysis of paraffin-embedded human liver cancer tissue slide using 13319-1-AP (CSDE1 antibody) at dilution of 1:200 (under 10x lens). Heat mediated antigen retrieval with Tris-EDTA buffer (pH 9.0).



Immunofluorescent analysis of (-20°C Ethanol) fixed HeLa cells using CSDE1 antibody (13319-1-AP) at dilution of 1:200 and CoraLite®488-Conjugated AffiniPure Goat Anti-Rabbit IgG(H+L), CL594-Phalloidin (red).



WB result of CSDE1 antibody (13319-1-AP; 1:20000; incubated at room temperature for 1.5 hours) with sh-Control and sh-CSDE1 transfected A431 cells.