

For Research Use Only

Cytoglobin Polyclonal antibody

Catalog Number: 13317-1-AP

Featured Product

9 Publications



Basic Information

Catalog Number:

13317-1-AP

Source:

Rabbit

Isotype:

IgG

Immunogen Catalog Number:

AG4161

GenBank Accession Number:

BC029798

GeneID (NCBI):

114757

UNIPROT ID:

Q8WWM9

Full Name:

cytoglobin

Calculated MW:

190 aa, 21 kDa

Observed MW:

21-29 kDa

Purification Method:

Antigen affinity purification

Recommended Dilutions:

WB: 1:500-1:3000

IHC: 1:20-1:200

Applications

Tested Applications:

WB, IHC, ELISA

Cited Applications:

WB, IHC, IF

Species Specificity:

human, mouse, rat

Cited Species:

human, mouse, rat

Note-IHC: suggested antigen retrieval with TE buffer pH 9.0; (*) Alternatively, antigen retrieval may be performed with citrate buffer pH 6.0

Positive Controls:

WB: mouse heart tissue, human heart tissue, human uterus tissue, mouse brain tissue, mouse kidney tissue, mouse lung tissue, mouse small intestine tissue, mouse spleen tissue, mouse stomach tissue, PC-3 cells, rat kidney tissue, Transfected HEK-293 cells

IHC: human liver cancer tissue, human heart tissue, human liver tissue, human prostate cancer tissue, human stomach tissue

Background Information

Cytoglobin, also named as Histoglobin, HGB, STAP and CYGB, belongs to the globin family. Cytoglobin may have a protective function during conditions of oxidative stress. It may be involved in intracellular oxygen storage or transfer. It serves as a defensive mechanism against oxidative stress both in vitro and in vivo. (PMID:21224051) Cytoglobin is a ubiquitously expressed hexacoordinate hemoglobin that may facilitate diffusion of oxygen through tissues. The protein, with calculated MW of 21 kD, runs as a 29kD one in canine retina, kidney, liver, lung, and heart. It may be caused by posttranslational modification of the protein. Various immuno-staining patterns were reported including nuclear, cytoplasm and extracellular location.

Notable Publications

Author	Pubmed ID	Journal	Application
Qin Feng	30417486	J Cell Physiol	IHC
Brenda Lilly	29969687	Vascul Pharmacol	WB
Joey De Backer	35850009	Redox Biol	WB

Storage

Storage:

Store at -20°C. Stable for one year after shipment.

Storage Buffer:

PBS with 0.02% sodium azide and 50% glycerol, pH7.3

Aliquoting is unnecessary for -20°C storage

For technical support and original validation data for this product please contact:

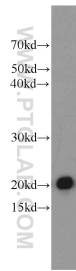
T: 4006900926

E: Proteintech-CN@ptglab.com

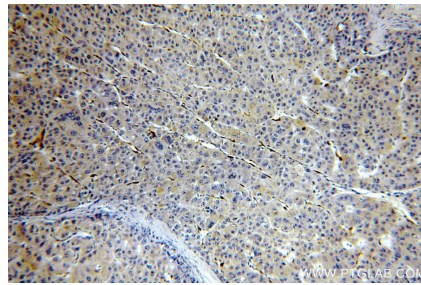
W: ptgcn.com

This product is exclusively available under Proteintech Group brand and is not available to purchase from any other manufacturer.

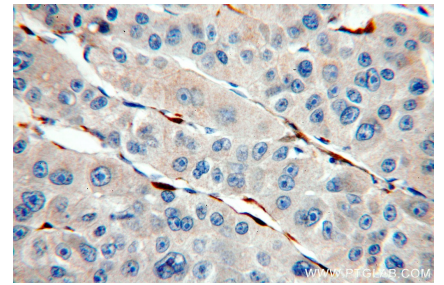
Selected Validation Data



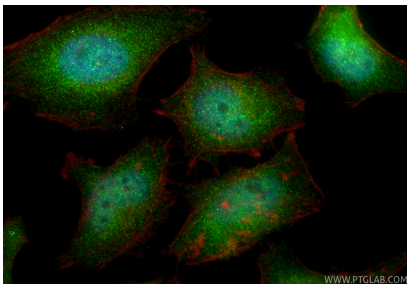
mouse heart tissue were subjected to SDS PAGE followed by western blot with 13317-1-AP (Cytoglobin antibody) at dilution of 1:1500 incubated at room temperature for 1.5 hours.



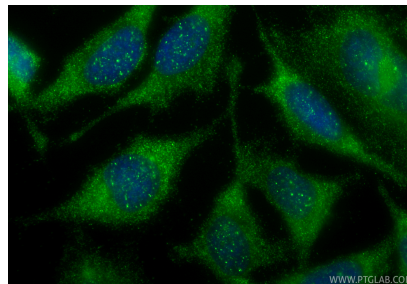
Immunohistochemical analysis of paraffin-embedded human liver cancer using 13317-1-AP (Cytoglobin antibody) at dilution of 1:100 (under 10x lens).



Immunohistochemical analysis of paraffin-embedded human liver cancer using 13317-1-AP (Cytoglobin antibody) at dilution of 1:100 (under 40x lens).



Immunofluorescent analysis of (4% PFA) fixed HeLa cells using Cytoglobin antibody (13317-1-AP) at dilution of 1:800 and CoraLite®488-Conjugated Goat Anti-Rabbit IgG(H+L) (SA00013-2), CL594-phalloidin (red).



Immunofluorescent analysis of (-20°C Ethanol) fixed HeLa cells using Cytoglobin antibody (13317-1-AP) at dilution of 1:800 and CoraLite®488-Conjugated Goat Anti-Rabbit IgG(H+L) (SA00013-2).