

For Research Use Only

# SLD5 Polyclonal antibody

Catalog Number:13315-1-AP



## Basic Information

**Catalog Number:**

13315-1-AP

**Size:**

650 ug/ml

**Source:**

Rabbit

**Isotype:**

IgG

**Immunogen Catalog Number:**

AG4158

**GenBank Accession Number:**

BC027454

**GeneID (NCBI):**

84296

**UNIPROT ID:**

Q9BRT9

**Full Name:**

GIN5 complex subunit 4 (Sld5 homolog)

**Calculated MW:**

223 aa, 26 kDa

**Observed MW:**

26 kDa

**Purification Method:**

Antigen affinity purification

**Recommended Dilutions:**

WB 1:200-1:1000

IF/ICC 1:200-1:800

## Applications

**Tested Applications:**

WB, IF/ICC, ELISA

**Species Specificity:**

human, mouse

**Positive Controls:**

WB : mouse thymus tissue, mouse testis tissue

IF/ICC : HeLa cells,

## Background Information

SLD5 (DNA replication complex GINS protein SLD5) is also named as GINS4 (GIN5 complex subunit 4). SLD5 is required for correct functioning of the GINS complex, a complex that plays an essential role in the initiation of DNA replication, and progression of DNA replication forks (PMID: 17417653). SLD5 forms a GINS complex with PSF1, PSF2 and PSF3, which is essential for the initiation of DNA replication in lower eukaryotes (PMID: 24244394). SLD5 is a member of the GINS complex, essential for DNA replication in eukaryotes. It has been reported that SLD5 is involved in early embryogenesis in the mouse, and cell cycle progression and genome integrity in Drosophila (PMID: 27499248).

## Storage

**Storage:**

Store at -20°C. Stable for one year after shipment.

**Storage Buffer:**

PBS with 0.02% sodium azide and 50% glycerol pH 7.3.

Aliquoting is unnecessary for -20°C storage

For technical support and original validation data for this product please contact:

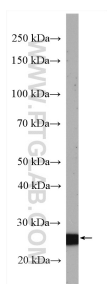
T: 4006900926

E: [Proteintech-CN@ptglab.com](mailto:Proteintech-CN@ptglab.com)

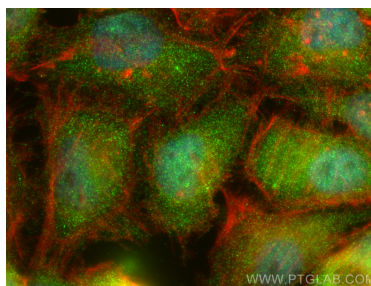
W: [ptgcn.com](http://ptgcn.com)

This product is exclusively available under Proteintech Group brand and is not available to purchase from any other manufacturer.

## Selected Validation Data



mouse thymus tissue were subjected to SDS PAGE followed by western blot with 13315-1-AP (SLD5 antibody) at dilution of 1:300 incubated at room temperature for 1.5 hours.



Immunofluorescent analysis of (4% PFA) fixed HeLa cells using SLD5 antibody (13315-1-AP) at dilution of 1:400 and Multi-rAb CoraLite® Plus 488-Goat Anti-Rabbit Recombinant Secondary Antibody (H+L) (RGAR002), CL594-phalloidin (red).