

GMEB2 Polyclonal antibody

Catalog Number: 13314-1-AP

Basic Information

Catalog Number:

13314-1-AP

Size:

650 ug/ml

Source:

Rabbit

Isotype:

IgG

Immunogen Catalog Number:

AG4157

GenBank Accession Number:

BC036305

GeneID (NCBI):

26205

UNIPROT ID:

Q9UKD1

Full Name:

glucocorticoid modulatory element
binding protein 2

Calculated MW:

530 aa, 56 kDa

Observed MW:

65-70 kDa

Purification Method:

Antigen affinity purification

Recommended Dilutions:

WB 1:500-1:1000

IHC 1:20-1:200

IF/ICC 1:200-1:800

Applications

Tested Applications:

WB, IHC, IF/ICC, ELISA

Species Specificity:

human, mouse, rat

**Note-IHC: suggested antigen retrieval with
TE buffer pH 9.0; (*) Alternatively, antigen
retrieval may be performed with citrate
buffer pH 6.0**

Positive Controls:

WB : human placenta tissue, mouse ovary tissue,
mouse thymus tissue

IHC : human cervical cancer tissue,

IF/ICC : MCF-7 cells,

Background Information

GMEB2, also named as Glucocorticoid modulatory element-binding protein 2, is a 530 amino acid protein, which is expressed in peripheral blood lymphocytes and fetal liver. GMEB2 as a trans-acting factor that binds to glucocorticoid modulatory elements (GME) present in the TAT (tyrosine aminotransferase) promoter and increases sensitivity to low concentrations of glucocorticoids. The calculated molecular weight of GMEB2 is 56 kDa, but modified GMEB2 is about 65-70 kDa.

Storage

Storage:

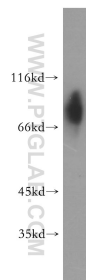
Store at -20°C. Stable for one year after shipment.

Storage Buffer:

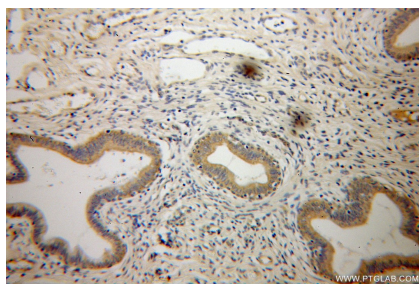
PBS with 0.02% sodium azide and 50% glycerol pH 7.3.

Aliquoting is unnecessary for -20°C storage

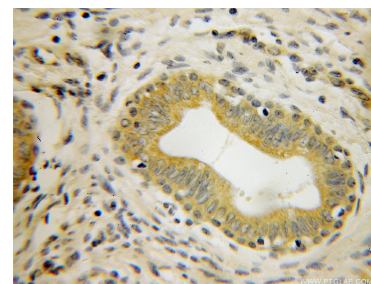
Selected Validation Data



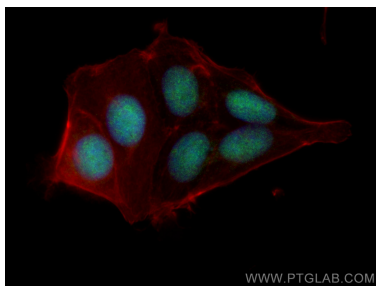
human placenta tissue were subjected to SDS PAGE followed by western blot with 13314-1-AP (GMEB2 antibody) at dilution of 1:300 incubated at room temperature for 1.5 hours.



Immunohistochemical analysis of paraffin-embedded human cervical cancer using 13314-1-AP (GMEB2 antibody) at dilution of 1:100 (under 10x lens).



Immunohistochemical analysis of paraffin-embedded human cervical cancer using 13314-1-AP (GMEB2 antibody) at dilution of 1:100 (under 40x lens).



Immunofluorescent analysis of (4% PFA) fixed MCF-7 cells using GMEB2 antibody (13314-1-AP) at dilution of 1:400 and CoraLite® 488-Conjugated AffiniPure Goat Anti-Rabbit IgG(H+L), CL594-Phalloidin (red).