

For Research Use Only

CXCL7/PPBP Polyclonal antibody

Catalog Number: 13313-1-AP

1 Publications



Basic Information

Catalog Number:

13313-1-AP

Concentration:

900 ug/ml

Source:

Rabbit

Isotype:

IgG

Immunogen Catalog Number:

AG4147

GenBank Accession Number:

BC028217

GeneID (NCBI):

5473

UNIPROT ID:

P02775

Full Name:

pro-platelet basic protein (chemokine (C-X-C motif) ligand 7)

Calculated MW:

128 aa, 14 kDa

Observed MW:

8-14 kDa

Purification Method:

Antigen affinity purification

Recommended Dilutions:

WB 1:200-1:1000

IHC 1:20-1:200

Applications

Tested Applications:

WB, IHC, ELISA

Cited Applications:

WB

Species Specificity:

human, mouse

Cited Species:

mouse

Note-IHC: suggested antigen retrieval with TE buffer pH 9.0; (*) Alternatively, antigen retrieval may be performed with citrate buffer pH 6.0

Positive Controls:

WB : mouse liver tissue, human liver tissue, human plasma tissue

IHC : human placenta tissue,

Background Information

PPBP, also named as NAP2, or β -Thromboglobulin, is a platelet-derived growth factor that belongs to the CXC chemokine family. This growth factor is a potent chemoattractant and activator of neutrophils. It has been shown to stimulate various cellular processes including DNA synthesis, mitosis, glycolysis, intracellular cAMP accumulation, prostaglandin E2 secretion, and synthesis of hyaluronic acid and sulfated glycosaminoglycan. It also stimulates the formation and secretion of plasminogen activator by synovial cells.

Notable Publications

Author	Pubmed ID	Journal	Application
Mehdi Eshraghi	33674575	Nat Commun	WB

Storage

Storage:

Store at -20°C. Stable for one year after shipment.

Storage Buffer:

PBS with 0.02% sodium azide and 50% glycerol pH 7.3.

Aliquoting is unnecessary for -20°C storage

For technical support and original validation data for this product please contact:

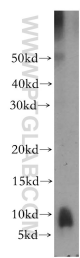
T: 4006900926

E: Proteintech-CN@ptglab.com

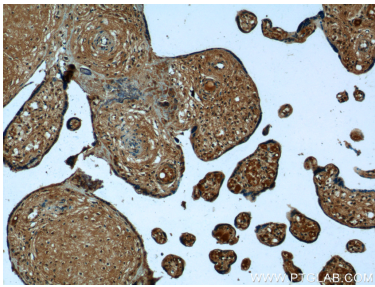
W: ptgcn.com

This product is exclusively available under Proteintech Group brand and is not available to purchase from any other manufacturer.

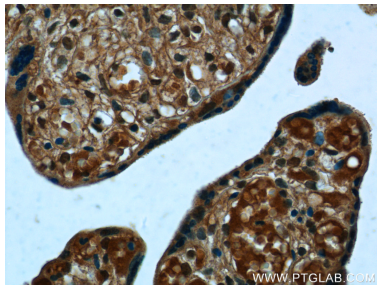
Selected Validation Data



mouse liver tissue were subjected to SDS PAGE followed by western blot with 13313-1-AP (PPBP,NAP2 antibody) at dilution of 1:300 incubated at room temperature for 1.5 hours.



Immunohistochemical analysis of paraffin-embedded human placenta tissue slide using 13313-1-AP (PPBP,NAP2 antibody at dilution of 1:50 (under 10x lens).



Immunohistochemical analysis of paraffin-embedded human placenta tissue slide using 13313-1-AP (PPBP,NAP2 antibody at dilution of 1:50 (under 40x lens).