

For Research Use Only

ATP2C1 Polyclonal antibody

Catalog Number: 13310-1-AP

6 Publications



Basic Information

Catalog Number:

13310-1-AP

Concentration:

350 ug/ml

Source:

Rabbit

Isotype:

IgG

Immunogen Catalog Number:

AG4143

GenBank Accession Number:

BC028139

GeneID (NCBI):

27032

UNIPROT ID:

P98194

Full Name:

ATPase, Ca⁺⁺ transporting, type 2C, member 1

Calculated MW:

919 aa, 101 kDa

Observed MW:

95-103 kDa

Purification Method:

Antigen affinity purification

Recommended Dilutions:

WB 1:1000-1:8000

IP 0.5-4.0 ug for 1.0-3.0 mg of total protein lysate

IHC 1:50-1:500

IF/ICC 1:200-1:800

Applications

Tested Applications:

WB, IHC, IF/ICC, IP, ELISA

Cited Applications:

WB, IF

Species Specificity:

human, mouse, rat

Cited Species:

human, mouse

Note-IHC: suggested antigen retrieval with TE buffer pH 9.0; (*) Alternatively, antigen retrieval may be performed with citrate buffer pH 6.0

Positive Controls:

WB : HeLa cells, A431 cells, human brain tissue, rat brain tissue, mouse brain tissue

IP : mouse kidney tissue,

IHC : mouse brain tissue,

IF/ICC : HepG2 cells,

Background Information

ATP2C1, also known as hSPCA1, belongs to the family of P-type cation transport ATPases. ATP2C1 is a Golgi-localized ATPase that mediates Golgi uptake of cytosolic Ca²⁺ and Mg²⁺ and has a role in regulating Ca²⁺ and Mn²⁺ cellular content (PMID: 11741891). ATP2C1 is found in most tissues except colon, thymus, spleen, and leukocytes. It is expressed in keratinocytes (PMID: 15831496, 14632183). Defects in ATP2C1 cause Hailey-Hailey disease (HHD)(PMID: 10615129, 28035777).

Notable Publications

Author	Pubmed ID	Journal	Application
Peiyao Li	36254249	Clin Cosmet Investig Dermatol	WB
Hongfu Xie	34239867	Front Cell Dev Biol	WB
Julian Terglane	39869616	PLoS One	IF

Storage

Storage:

Store at -20°C. Stable for one year after shipment.

Storage Buffer:

PBS with 0.02% sodium azide and 50% glycerol, pH7.3

Aliquoting is unnecessary for -20°C storage

For technical support and original validation data for this product please contact:

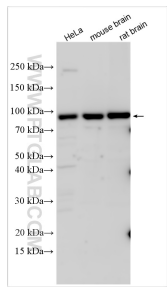
T: 4006900926

E: Proteintech-CN@ptglab.com

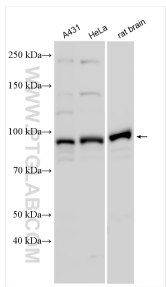
W: ptgcn.com

This product is exclusively available under Proteintech Group brand and is not available to purchase from any other manufacturer.

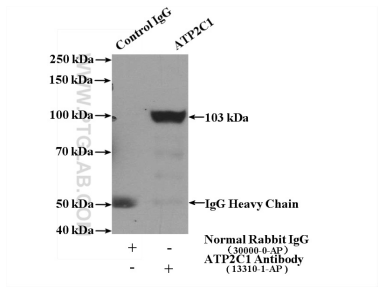
Selected Validation Data



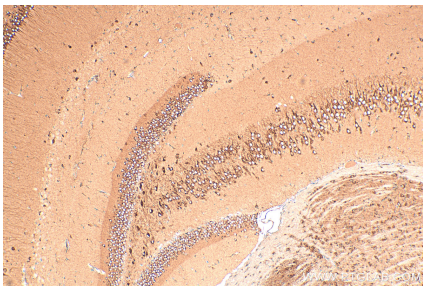
Various lysates were subjected to SDS PAGE followed by western blot with 13310-1-AP (ATP2C1 antibody) at dilution of 1:4000 incubated at room temperature for 1.5 hours.



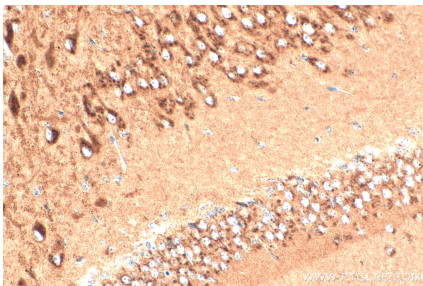
Various lysates were subjected to SDS PAGE followed by western blot with 13310-1-AP (ATP2C1 antibody) at dilution of 1:1500 incubated at room temperature for 1.5 hours.



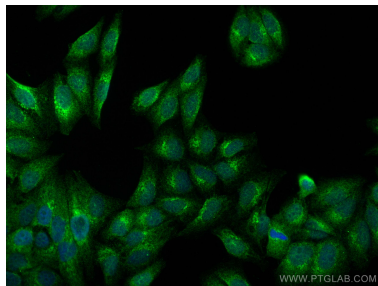
IP result of anti-ATP2C1 (IP:13310-1-AP, 4ug; Detection:13310-1-AP 1:500) with mouse kidney tissue lysate 4000ug.



Immunohistochemical analysis of paraffin-embedded mouse brain tissue slide using 13310-1-AP (ATP2C1 antibody) at dilution of 1:200 (under 10x lens). Heat mediated antigen retrieval with Tris-EDTA buffer (pH 9.0).



Immunohistochemical analysis of paraffin-embedded mouse brain tissue slide using 13310-1-AP (ATP2C1 antibody) at dilution of 1:200 (under 40x lens). Heat mediated antigen retrieval with Tris-EDTA buffer (pH 9.0).



Immunofluorescent analysis of (4% PFA) fixed HepG2 cells using ATP2C1 antibody (13310-1-AP) at dilution of 1:400 and CoraLite®488-Conjugated AffiniPure Goat Anti-Rabbit IgG(H+L).