

For Research Use Only

GHRL Polyclonal antibody

Catalog Number: 13309-1-AP

7 Publications



Basic Information

Catalog Number: 13309-1-AP	GenBank Accession Number: BC025791	Purification Method: Antigen affinity purification
Concentration: 400 ug/ml	GeneID (NCBI): 51738	Recommended Dilutions: WB 1:200-1:1000 IHC 1:600-1:2400
Source: Rabbit	UNIPROT ID: Q9UBU3	
Isotype: IgG	Full Name: ghrelin/obestatin prepropeptide	
Immunogen Catalog Number: AG4141	Calculated MW: 117 aa, 13 kDa Observed MW: 13 kDa	

Applications

Tested Applications: WB, IHC, ELISA	Positive Controls: WB : human stomach tissue, IHC : human stomach tissue,
Cited Applications: WB, IHC	
Species Specificity: human, mouse, rat	
Cited Species: human, mouse, rat	
Note-IHC: suggested antigen retrieval with TE buffer pH 9.0; (*) Alternatively, antigen retrieval may be performed with citrate buffer pH 6.0	

Background Information

GHRL encodes ghrelin-obestatin preproprotein, which generates ghrelin and obestatin. Ghrelin is predominantly produced in endocrine cells in the gastric mucosa, called X/A-like or ghrelin cells, from where it is secreted into the plasma. In the pituitary gland, ghrelin stimulates GH release and regulates food intake and energy metabolism. Obestatin was initially reported to be an endogenous ligand for the orphan G protein-coupled receptor GPR39 and was involved in satiety and decreased food intake; however, these findings are controversial. Recent reports show that obestatin is involved in inhibiting thirst and anxiety, improving memory, regulating sleep, affecting cell proliferation, and increasing the secretion of pancreatic juice enzymes.

Notable Publications

Author	Pubmed ID	Journal	Application
Ping Ma	34710756	Phytomedicine	WB
Jing-Wei Xing	33913930	Neuroreport	IHC
	28984792	Pancreas	WB

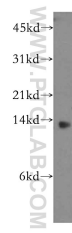
Storage

Storage:
Store at -20°C. Stable for one year after shipment.
Storage Buffer:
PBS with 0.02% sodium azide and 50% glycerol pH 7.3.
Aliquoting is unnecessary for -20°C storage

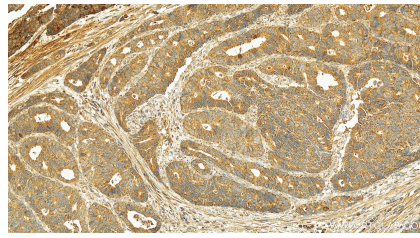
For technical support and original validation data for this product please contact:
T: 4006900926 E: Proteintech-CN@ptglab.com W: ptgcn.com

This product is exclusively available under Proteintech Group brand and is not available to purchase from any other manufacturer.

Selected Validation Data



human stomach tissue were subjected to SDS PAGE followed by western blot with 13309-1-AP (GHRL antibody) at dilution of 1:400 incubated at room temperature for 1.5 hours.



Immunohistochemical analysis of paraffin-embedded normal stomach slide using 13309-1-AP (GHRL antibody) at dilution of 1:1200 (under 20x lens). Heat mediated antigen retrieval with Tris-EDTA buffer (pH 9.0).