

For Research Use Only

TRIB3 Polyclonal antibody

Catalog Number: 13300-1-AP

Featured Product

32 Publications



Basic Information

Catalog Number:

13300-1-AP

Size:

1000 µg/ml

Source:

Rabbit

Isotype:

IgG

Immunogen Catalog Number:

AG4085

GenBank Accession Number:

BC027484

GeneID (NCBI):

57761

UNIPROT ID:

Q96RU7

Full Name:

tribbles homolog 3 (Drosophila)

Calculated MW:

358 aa, 40 kDa

Observed MW:

40-45 kDa

Purification Method:

Antigen affinity purification

Recommended Dilutions:

WB 1:500-1:3000

Applications

Tested Applications:

WB, ELISA

Cited Applications:

WB, IP, IF, IHC

Species Specificity:

human

Cited Species:

human, monkey

Positive Controls:

WB : L02 cells,

Background Information

TRIB3 is a pseudokinase molecule that affects a number of cellular functions. TRIB3 has been reported to be highly activated in the presence of a variety of stressors, including the deprivation of neurotrophic factors, hypoxia, and ER stress. TRIB3 protein is associated with a good prognosis in human breast cancer patients, possibly due to the fact that TRIB3 is involved in hypoxia tolerance. (PMID: 21704407). TRIB3 protein predicted molecular weights is approximately 39-45 kDa. (PMID: 31191318, PMID: 24414038, PMID: 31578236).

Notable Publications

Author	Pubmed ID	Journal	Application
Margita Márton	36097827	FEBS Open Bio	WB
Nan Wang	34503515	Reprod Biol Endocrinol	IF
Yasukazu Takanezawa	34678407	Toxicol Lett	WB

Storage

Storage:

Store at -20°C. Stable for one year after shipment.

Storage Buffer:

PBS with 0.02% sodium azide and 50% glycerol pH 7.3.

Aliquoting is unnecessary for -20°C storage

For technical support and original validation data for this product please contact:

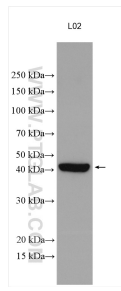
T: 4006900926

E: Proteintech-CN@ptglab.com

W: ptgcn.com

This product is exclusively available under Proteintech Group brand and is not available to purchase from any other manufacturer.

Selected Validation Data



L02 cells were subjected to SDS PAGE followed by western blot with 13300-1-AP (TRIB3 antibody) at dilution of 1:1500 incubated at room temperature for 1.5 hours.