

For Research Use Only

# IZUMO1 Polyclonal antibody

Catalog Number: 13296-1-AP



## Basic Information

**Catalog Number:**

13296-1-AP

**Size:**

493 ug/ml

**Source:**

Rabbit

**Isotype:**

IgG

**Immunogen Catalog Number:**

AG4008

**GenBank Accession Number:**

BC034769

**GeneID (NCBI):**

284359

**UNIPROT ID:**

Q8IYV9

**Full Name:**

izumo sperm-egg fusion 1

**Calculated MW:**

350 aa, 39 kDa

**Observed MW:**

56 kDa

**Purification Method:**

Antigen affinity purification

**Recommended Dilutions:**

WB 1:500-1:1000

IF-P 1:50-1:500

## Applications

**Tested Applications:**

WB, IF-P, ELISA

**Species Specificity:**

human, mouse

**Positive Controls:**

WB : mouse testis tissue,

IF-P : mouse testis tissue,

## Background Information

IZUMO1, also named as OBF, is a sperm-specific protein. It is a novel member of the immunoglobulin superfamily located on sperm and is indispensable for sperm-egg fusion. For mouse Izumo1, the MW is about 56 kDa. For human IZUMO1, the MW is about 37-40 kDa in WB detection.

## Storage

**Storage:**

Store at -20°C. Stable for one year after shipment.

**Storage Buffer:**

PBS with 0.02% sodium azide and 50% glycerol pH 7.3.

Aliquoting is unnecessary for -20°C storage

For technical support and original validation data for this product please contact:

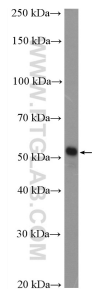
T: 4006900926

E: [Proteintech-CN@ptglab.com](mailto:Proteintech-CN@ptglab.com)

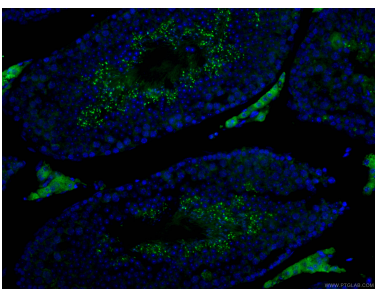
W: [ptgcn.com](http://ptgcn.com)

This product is exclusively available under Proteintech Group brand and is not available to purchase from any other manufacturer.

# Selected Validation Data



mouse testis tissue were subjected to SDS PAGE followed by western blot with 13296-1-AP (IZUMO1 antibody) at dilution of 1:500 incubated at room temperature for 1.5 hours.



Immunofluorescent analysis of (4% PFA) fixed mouse testis tissue using 13296-1-AP (IZUMO1 antibody), at dilution of 1:100 and CoraLite®488-Conjugated AffiniPure Goat Anti-Rabbit IgG(H+L).