

For Research Use Only

# ADH6 Polyclonal antibody

Catalog Number: 13288-2-AP



## Basic Information

**Catalog Number:**

13288-2-AP

**Size:**

700 ug/ml

**Source:**

Rabbit

**Isotype:**

IgG

**Immunogen Catalog Number:**

AG3984

**GenBank Accession Number:**

BC039065

**GeneID (NCBI):**

130

**UNIPROT ID:**

P28332

**Full Name:**

alcohol dehydrogenase 6 (class V)

**Calculated MW:**

368 aa, 39 kDa

**Observed MW:**

39 kDa

**Purification Method:**

Antigen affinity purification

**Recommended Dilutions:**

WB 1:2000-1:12000

IHC 1:1000-1:4000

IF/ICC 1:200-1:800

## Applications

**Tested Applications:**

WB, IHC, IF/ICC, ELISA

**Species Specificity:**

human, mouse, rat

**Note-IHC: suggested antigen retrieval with *TE buffer pH 9.0*; (\*) Alternatively, antigen retrieval may be performed with *citrate buffer pH 6.0***

**Positive Controls:**

**WB :** mouse liver tissue, human liver tissue, rat liver tissue

**IHC :** human liver tissue, mouse kidney tissue, mouse liver tissue, rat kidney tissue, rat liver tissue

**IF/ICC :** MCF-7 cells,

## Background Information

### Storage

**Storage:**

Store at -20°C. Stable for one year after shipment.

**Storage Buffer:**

PBS with 0.02% sodium azide and 50% glycerol pH 7.3.

Aliquoting is unnecessary for -20°C storage

For technical support and original validation data for this product please contact:

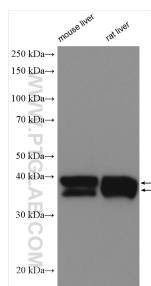
T: 4006900926

E: [Proteintech-CN@ptglab.com](mailto:Proteintech-CN@ptglab.com)

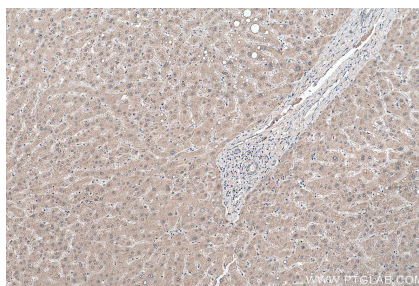
W: [ptgcn.com](http://ptgcn.com)

**This product is exclusively available under Proteintech Group brand and is not available to purchase from any other manufacturer.**

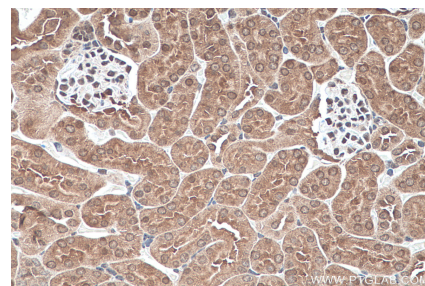
## Selected Validation Data



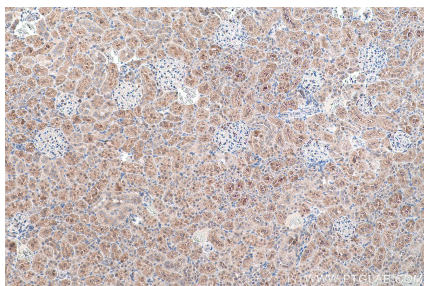
Various lysates were subjected to SDS PAGE followed by western blot with 13288-2-AP (ADH6 antibody) at dilution of 1:6000 incubated at room temperature for 1.5 hours.



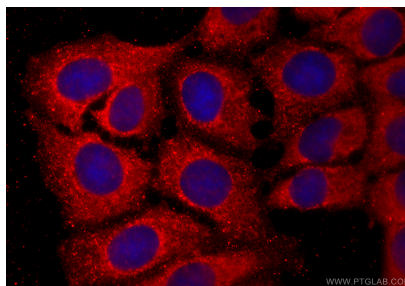
Immunohistochemical analysis of paraffin-embedded human liver tissue slide using 13288-2-AP (ADH6 antibody) at dilution of 1:2000 (under 10x lens). Heat mediated antigen retrieval with Tris-EDTA buffer (pH 9.0).



Immunohistochemical analysis of paraffin-embedded mouse kidney tissue slide using 13288-2-AP (ADH6 antibody) at dilution of 1:1000 (under 40x lens). Heat mediated antigen retrieval with Tris-EDTA buffer (pH 9.0).



Immunohistochemical analysis of paraffin-embedded rat kidney tissue slide using 13288-2-AP (ADH6 antibody) at dilution of 1:1000 (under 10x lens). Heat mediated antigen retrieval with Tris-EDTA buffer (pH 9.0).



Immunofluorescent analysis of (-20°C Methanol) fixed MCF-7 cells using ADH6 antibody (13288-2-AP) at dilution of 1:400 and CoraLite®594-Conjugated Goat Anti-Rabbit IgG(H+L) (SA00013-4).