

For Research Use Only

CPEB1 Polyclonal antibody

Catalog Number: 13274-1-AP

Featured Product

17 Publications



Basic Information

Catalog Number:

13274-1-AP

Size:

300 µg/ml

Source:

Rabbit

Isotype:

IgG

Immunogen Catalog Number:

AG3994

GenBank Accession Number:

BC035348

GeneID (NCBI):

64506

UNIPROT ID:

Q9BZB8

Full Name:

cytoplasmic polyadenylation
element binding protein 1

Calculated MW:

486 aa, 54 kDa

Observed MW:

60-70kDa

Purification Method:

Antigen affinity purification

Recommended Dilutions:

WB 1:1000-1:4000

IHC 1:50-1:200

IF/ICC 1:50-1:500

Applications

Tested Applications:

WB, IHC, IF/ICC, ELISA

Cited Applications:

WB, IHC, IF, IP, RIP

Species Specificity:

human, mouse, rat

Cited Species:

human, mouse, rat, asterina pectinifera

**Note-IHC: suggested antigen retrieval with
TE buffer pH 9.0; (*) Alternatively, antigen
retrieval may be performed with citrate
buffer pH 6.0**

Positive Controls:

WB : HEK-293T cells, HeLa cells, NIH/3T3 cells

IHC : human liver cancer tissue, human breast cancer
tissue, human colon cancer tissue

IF/ICC : HeLa cells,

Background Information

CPEB1, also named as CEBP, CPEB and CPE-BP1, contains two RRM (RNA recognition motif) domains and belongs to the RRM CPEB family. It is a sequence-specific RNA-binding protein that regulates mRNA cytoplasmic polyadenylation and translation initiation during oocyte maturation, early development and at postsynapse sites of neurons. CPEB1 regulated translation is a key process involved in INS signaling. This is a rabbit polyclonal antibody raised against residues near the C terminus of human CPEB1.

Notable Publications

Author	Pubmed ID	Journal	Application
Valeria Giangarrà	26398195	PLoS One	WB
Gelei Xiao	34678444	Brain Res Bull	WB,IF
Christopher R Neil	34613784	Mol Biol Cell	WB

Storage

Storage:

Store at -20°C. Stable for one year after shipment.

Storage Buffer:

PBS with 0.02% sodium azide and 50% glycerol pH 7.3.

Aliquoting is unnecessary for -20°C storage

For technical support and original validation data for this product please contact:

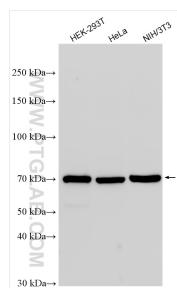
T: 4006900926

E: Proteintech-CN@ptglab.com

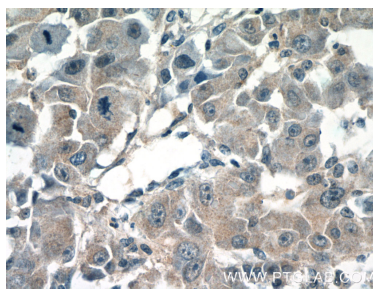
W: ptgcn.com

This product is exclusively available under Proteintech Group brand and is not available to purchase from any other manufacturer.

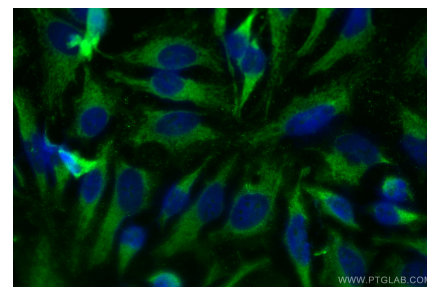
Selected Validation Data



Various lysates were subjected to SDS PAGE followed by western blot with 13274-1-AP (CPEB1 antibody) at dilution of 1:2000 incubated at room temperature for 1.5 hours.



Immunohistochemical analysis of paraffin-embedded human liver cancer tissue slide using 13274-1-AP (CPEB1 Antibody) at dilution of 1:50 (under 40x Lens).



Immunofluorescent analysis of (-20°C Ethanol) fixed HeLa cells using CPEB1 antibody (13274-1-AP) at dilution of 1:200 and CoraLite®488-Conjugated Goat Anti-Rabbit IgG(H+L).