

SPPL2A Polyclonal antibody

Catalog Number: 13255-1-AP

Basic Information

Catalog Number: 13255-1-AP	GenBank Accession Number: BC025740	Purification Method: Antigen affinity purification
Size: 280 µg/ml	GeneID (NCBI): 84888	Recommended Dilutions: WB 1:500-1:1000 IHC 1:20-1:200
Source: Rabbit	UNIPROT ID: Q8TCT8	
Isotype: IgG	Full Name: signal peptide peptidase-like 2A	
Immunogen Catalog Number: AG3935	Calculated MW: 520 aa, 58 kDa Observed MW: 58 kDa	

Applications

Tested Applications:
IHC, WB, ELISA

Species Specificity:
human, mouse, rat

Note-IHC: suggested antigen retrieval with **TE buffer pH 9.0; (*) Alternatively, antigen retrieval may be performed with citrate buffer pH 6.0**

Positive Controls:

WB : human colon tissue, Jurkat cells, mouse colon tissue

IHC : human testis tissue, human kidney tissue

Background Information

SPPL2A (Signal peptide peptidase-like 2A) is also named as IMP3 (Intramembrane protease 3), PSL2 (Presenilin-like protein 2) and belongs to the peptidase A22B family. It is an aspartyl intramembrane protease, has been implicated in the proteolysis of TNF- α , Fas Ligand and Bri2 and endogenous signal-peptide-peptidase-like 2A (SPPL2a) is localised in lysosomes/late endosomes (PMID:21896273). This protein has a signal peptide with 25 amino acid and seven glycosylation sites.

Storage

Storage:
Store at -20°C. Stable for one year after shipment.
Storage Buffer:
PBS with 0.02% sodium azide and 50% glycerol pH 7.3.
Aliquoting is unnecessary for -20°C storage

For technical support and original validation data for this product please contact:

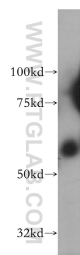
T: 4006900926

E: Proteintech-CN@ptglab.com

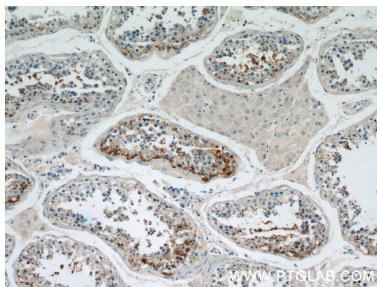
W: ptgcn.com

This product is exclusively available under Proteintech Group brand and is not available to purchase from any other manufacturer.

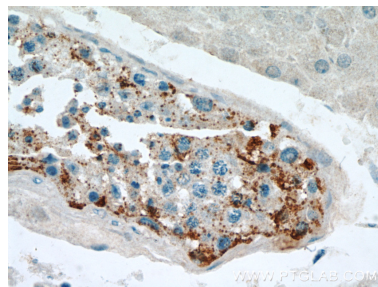
Selected Validation Data



human colon tissue were subjected to SDS PAGE followed by western blot with 13255-1-AP (SPPL2A antibody) at dilution of 1:500 incubated at room temperature for 1.5 hours.



Immunohistochemical analysis of paraffin-embedded human testis using 13255-1-AP (SPPL2A antibody) at dilution of 1:50 (under 10x lens).



Immunohistochemical analysis of paraffin-embedded human testis using 13255-1-AP (SPPL2A antibody) at dilution of 1:50 (under 40x lens).