

For Research Use Only

CYP4F12 Polyclonal antibody

Catalog Number: 13243-1-AP

1 Publications



Basic Information

Catalog Number:

13243-1-AP

Concentration:

700 ug/ml

Source:

Rabbit

Isotype:

IgG

Immunogen Catalog Number:

AG3957

GenBank Accession Number:

BC035350

GeneID (NCBI):

66002

UNIPROT ID:

Q9HCS2

Full Name:

cytochrome P450, family 4, subfamily F, polypeptide 12

Calculated MW:

524 aa, 60 kDa

Observed MW:

50-60 kDa

Purification Method:

Antigen affinity purification

Recommended Dilutions:

WB 1:1000-1:8000

IHC 1:400-1:1600

Applications

Tested Applications:

WB, IHC, ELISA

Cited Applications:

WB

Species Specificity:

human, mouse, rat

Cited Species:

human

Note-IHC: suggested antigen retrieval with TE buffer pH 9.0; (*) Alternatively, antigen retrieval may be performed with citrate buffer pH 6.0

Positive Controls:

WB : mouse liver tissue, human placenta tissue, rat liver tissue

IHC : human stomach cancer tissue, human small intestine tissue

Background Information

CYP4F12(Cytochrome P450 4F12) Catalyzes leukotriene B4 omega-hydroxylation and arachidonic acid omega-hydroxylation but with an activity much lower than that of CYP4F2. It expresses a band of 60kDa in adult and fetal liver, kidney, placenta at term, seminal vesicles, and the prostate gland(PMID:15078342). And it can be phosphorylated in vivo(PMID:18828626).

Notable Publications

Author	Pubmed ID	Journal	Application
Wenming Jia	37414830	Sci Rep	WB

Storage

Storage:

Store at -20°C. Stable for one year after shipment.

Storage Buffer:

PBS with 0.02% sodium azide and 50% glycerol, pH7.3

Aliquoting is unnecessary for -20°C storage

For technical support and original validation data for this product please contact:

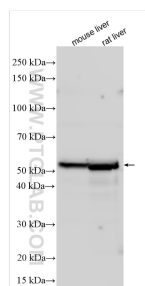
T: 4006900926

E: Proteintech-CN@ptglab.com

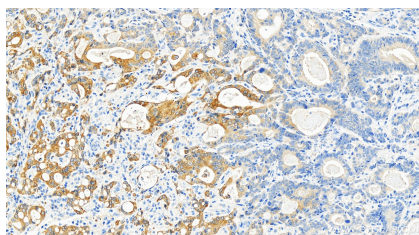
W: ptgcn.com

This product is exclusively available under Proteintech Group brand and is not available to purchase from any other manufacturer.

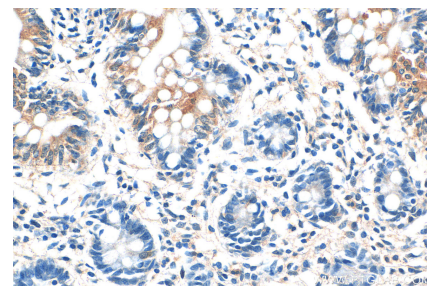
Selected Validation Data



Various lysates were subjected to SDS PAGE followed by western blot with 13243-1-AP (CYP4F12 antibody) at dilution of 1:4000 incubated at room temperature for 1.5 hours.



Immunohistochemical analysis of paraffin-embedded human stomach cancer tissue slide using 13243-1-AP (CYP4F12 antibody) at dilution of 1:800 (under 20x lens). Heat mediated antigen retrieval with Tris-EDTA buffer (pH 9.0).



Immunohistochemical analysis of paraffin-embedded human small intestine tissue slide using 13243-1-AP (CYP4F12 antibody) at dilution of 1:500 (under 40x lens).