

SLC22A4 Polyclonal antibody

Catalog Number: 13238-1-AP

Basic Information

Catalog Number:

13238-1-AP

Size:

270 µg/ml

Source:

Rabbit

Isotype:

IgG

Immunogen Catalog Number:

AG3974

GenBank Accession Number:

BC028313

GeneID (NCBI):

6583

UNIPROT ID:

Q9H015

Full Name:

solute carrier family 22 (organic cation/ergothioneine transporter), member 4

Calculated MW:

551 aa, 62 kDa

Observed MW:

62-70 kDa

Purification Method:

Antigen affinity purification

Recommended Dilutions:

WB 1:500-1:2000

Applications

Tested Applications:

WB, ELISA

Species Specificity:

mouse

Positive Controls:

WB : mouse kidney tissue, 37°C incubated mouse kidney tissue

Background Information

SLC22A4 (solute carrier family 22 member 4), also known as OCTN1. It is expected to be located in cell membrane and mitochondrion membrane. It is strongly expressed in kidney, trachea, bone marrow and fetal liver and in several human cancer cell lines, but not in adult liver (PMID: 9426230). The protein functions as a Na⁺-dependent and pH-dependent high affinity microbial symporter of potent food-derived antioxidant ergothioneine (PubMed:15795384), which transports one sodium ion with one ergothioneine molecule. The calculated molecular weight of SLC22A4 is 62 kDa, the band of 70 kDa is glycosylated (PMID:26724204).

Storage

Storage:

Store at -20°C. Stable for one year after shipment.

Storage Buffer:

PBS with 0.02% sodium azide and 50% glycerol pH 7.3.

Aliquoting is unnecessary for -20°C storage

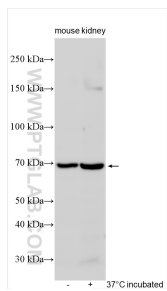
For technical support and original validation data for this product please contact:

T: 4006900926

E: Proteintech-CN@ptglab.comW: ptgcn.com

This product is exclusively available under Proteintech Group brand and is not available to purchase from any other manufacturer.

Selected Validation Data



boiled and 37°C incubated mouse kidney tissue lysates were subjected to SDS PAGE followed by western blot with 13238-1-AP (SLC22A4 antibody) at dilution of 1:1000 incubated at room temperature for 1.5 hours.