

# ATP12A Polyclonal antibody

Catalog Number: **13231-1-AP**

## Basic Information

**Catalog Number:**

13231-1-AP

**Size:**

133 µg/ml

**Source:**

Rabbit

**Isotype:**

IgG

**Immunogen Catalog Number:**

AG4105

**GenBank Accession Number:**

BC031609

**GeneID (NCBI):**

479

**Full Name:**

ATPase, H<sup>+</sup>/K<sup>+</sup> transporting,  
nongastric, alpha polypeptide

**Calculated MW:**

1045 aa, 116 kDa

**Observed MW:**

100-110 kDa

**Purification Method:**

Antigen affinity purification

**Recommended Dilutions:**

WB 1:500-1:1000

## Applications

**Tested Applications:**

WB, ELISA

**Species Specificity:**

human

**Positive Controls:**

WB : HEK-293 cells, A431 cells

## Background Information

ATP12A, also named as ATP1AL1 and Proton pump, belongs to the family of P-type cation transport ATPases. It catalyzes the hydrolysis of ATP coupled with the exchange of H<sup>+</sup> and K<sup>+</sup> ions across the plasma membrane. ATP12A is responsible for potassium absorption in various tissues. Expression of ATP12A is increased in benign prostate hyperplasia and tumor tissues.

## Storage

**Storage:**

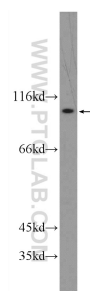
Store at -20°C. Stable for one year after shipment.

**Storage Buffer:**

PBS with 0.02% sodium azide and 50% glycerol pH 7.3.

Aliquoting is unnecessary for -20°C storage

## Selected Validation Data



HEK-293 cells were subjected to SDS PAGE followed by western blot with 13231-1-AP (ATP12A Antibody) at dilution of 1:500 incubated at room temperature for 1.5 hours.