

For Research Use Only

CKMT2 Polyclonal antibody

Catalog Number: 13207-1-AP

Featured Product

11 Publications



Basic Information

Catalog Number:

13207-1-AP

Size:

1000 ug/ml

Source:

Rabbit

Isotype:

IgG

Immunogen Catalog Number:

AG3971

GenBank Accession Number:

BC029140

GeneID (NCBI):

1160

UNIPROT ID:

P17540

Full Name:

creatine kinase, mitochondrial 2 (sarcomeric)

Calculated MW:

419 aa, 48 kDa

Observed MW:

41-48 kDa

Purification Method:

Antigen affinity purification

Recommended Dilutions:

WB 1:2000-1:8000

IHC 1:500-1:2000

Applications

Tested Applications:

WB, IHC, ELISA

Cited Applications:

WB, IHC, IF, CoIP

Species Specificity:

human, mouse, rat

Cited Species:

human, mouse, chicken

Note-IHC: suggested antigen retrieval with TE buffer pH 9.0; (*) Alternatively, antigen retrieval may be performed with citrate buffer pH 6.0

Positive Controls:

WB : mouse heart tissue, human heart tissue, human skeletal muscle tissue, mouse skeletal muscle tissue

IHC : mouse heart tissue,

Background Information

Notable Publications

Author	Pubmed ID	Journal	Application
Suzhen Chen	33657393	Cell Metab	WB
Yunlei Li	33451708	Mol Cell Proteomics	WB
Sho Nishikawa	31914311	J Agric Food Chem	WB

Storage

Storage:

Store at -20°C. Stable for one year after shipment.

Storage Buffer:

PBS with 0.02% sodium azide and 50% glycerol pH 7.3.

Aliquoting is unnecessary for -20°C storage

For technical support and original validation data for this product please contact:

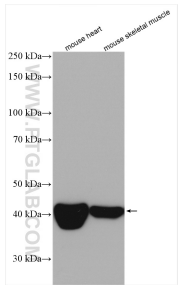
T: 4006900926

E: Proteintech-CN@ptglab.com

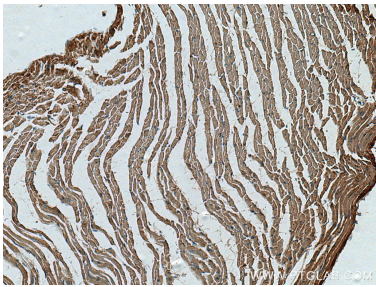
W: ptgcn.com

This product is exclusively available under Proteintech Group brand and is not available to purchase from any other manufacturer.

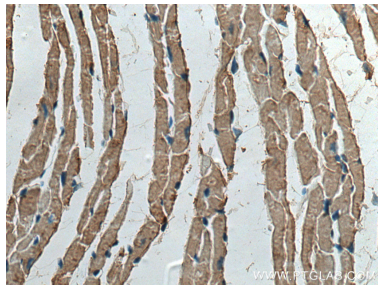
Selected Validation Data



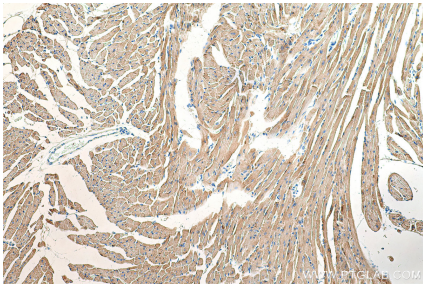
Various lysates were subjected to SDS PAGE followed by western blot with 13207-1-AP (CKMT2 antibody) at dilution of 1:5000 incubated at room temperature for 1.5 hours.



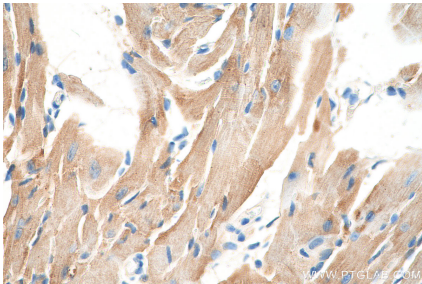
Immunohistochemical analysis of paraffin-embedded mouse heart tissue slide using 13207-1-AP (CKMT2 antibody) at dilution of 1:1000 (under 10x lens). Heat mediated antigen retrieval with Tris-EDTA buffer (pH 9.0).



Immunohistochemical analysis of paraffin-embedded mouse heart tissue slide using 13207-1-AP (CKMT2 antibody) at dilution of 1:1000 (under 40x lens). Heat mediated antigen retrieval with Tris-EDTA buffer (pH 9.0).



Immunohistochemical analysis of paraffin-embedded mouse heart tissue slide using 13207-1-AP (CKMT2 antibody) at dilution of 1:500 (under 10x lens). Heat mediated antigen retrieval with Tris-EDTA buffer (pH 9.0).



Immunohistochemical analysis of paraffin-embedded mouse heart tissue slide using 13207-1-AP (CKMT2 antibody) at dilution of 1:500 (under 40x lens). Heat mediated antigen retrieval with Tris-EDTA buffer (pH 9.0).