

AK3L1 Polyclonal antibody

Catalog Number: 13206-1-AP

Featured Product

2 Publications

Basic Information

Catalog Number:

13206-1-AP

Size:

900 µg/ml

Source:

Rabbit

Isotype:

IgG

Immunogen Catalog Number:

AG3966

GenBank Accession Number:

BC040224

GeneID (NCBI):

205

UNIPROT ID:

P27144

Full Name:

adenylate kinase 3-like 1

Calculated MW:

223 aa, 25 kDa

Observed MW:

30 kDa

Purification Method:

Antigen affinity purification

Recommended Dilutions:

WB 1:500-1:3600

IP 0.5-4.0 µg for 1.0-3.0 mg of total protein lysate

IHC 1:50-1:500

IF/ICC 1:50-1:500

Applications

Tested Applications:

WB, IHC, IF/ICC, IP, ELISA

Cited Applications:

WB, IHC

Species Specificity:

human, mouse

Cited Species:

human, rat

Note-IHC: suggested antigen retrieval with TE buffer pH 9.0; (*) Alternatively, antigen retrieval may be performed with citrate buffer pH 6.0

Positive Controls:

WB : MCF7 cells, human liver tissue

IP : MCF-7 cells,

IHC : human breast cancer tissue,

IF/ICC : MCF-7 cells,

Background Information

AK3L1(Adenylate kinase 3-like) is also named as AK4, AK3L1 and belongs to the adenylate kinase family. It catalyzes the reversible transfer of the terminal phosphate group between ATP and AMP. It is important for maintenance of homeostasis of the adenine and guanine nucleotide pools. Expression is highest in kidney and heart, moderate in liver, weak in brain, and barely detectable in placenta and lung by northern blot(PMID:11485571). This antibody may also recognize AK3 due to the high homology.

Notable Publications

Author	Pubmed ID	Journal	Application
Chunbao Zang	30479565	Cancer Cell Int	WB
Wei Jiang	37932484	Exp Brain Res	WB,IHC

Storage

Storage:

Store at -20°C. Stable for one year after shipment.

Storage Buffer:

PBS with 0.02% sodium azide and 50% glycerol pH 7.3.

Aliquoting is unnecessary for -20°C storage

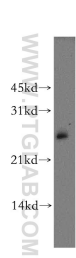
For technical support and original validation data for this product please contact:

T: 4006900926

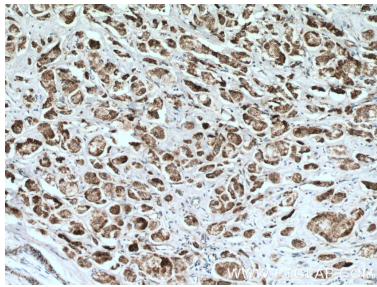
E: Proteintech-CN@ptglab.comW: ptgcn.com

This product is exclusively available under Proteintech Group brand and is not available to purchase from any other manufacturer.

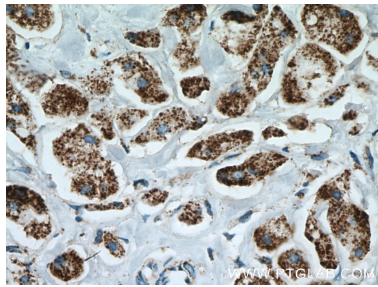
Selected Validation Data



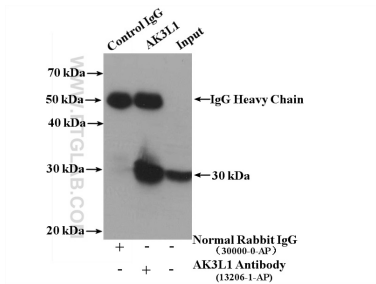
MCF-7 cells were subjected to SDS PAGE followed by western blot with 13206-1-AP (AK3L1 antibody) at dilution of 1:400 incubated at room temperature for 1.5 hours.



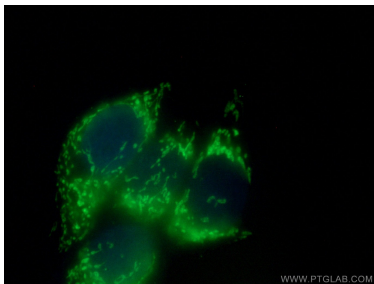
Immunohistochemical analysis of paraffin-embedded human breast cancer tissue slide using 13206-1-AP (AK3L1 antibody) at dilution of 1:200 (under 10x lens. Heat mediated antigen retrieval with Tris-EDTA buffer (pH 9.0).



Immunohistochemical analysis of paraffin-embedded human breast cancer tissue slide using 13206-1-AP (AK3L1 antibody) at dilution of 1:200 (under 40x lens. Heat mediated antigen retrieval with Tris-EDTA buffer (pH 9.0).



IP result of anti-AK3L1 (IP:13206-1-AP, 4ug; Detection:13206-1-AP 1:300) with MCF-7 cells lysate 3200 ug.



Immunofluorescent analysis of (4% PFA) fixed MCF-7 cells using 13206-1-AP (AK3L1 antibody) at dilution of 1:100 and CoraLite488-Conjugated AffiniPure Goat Anti-Rabbit IgG(H+L).