

For Research Use Only

PPM1B Polyclonal antibody

Catalog Number: 13193-1-AP

6 Publications



Basic Information

Catalog Number:

13193-1-AP

Size:

700 µg/ml

Source:

Rabbit

Isotype:

IgG

Immunogen Catalog Number:

AG3871

GenBank Accession Number:

BC012002

GeneID (NCBI):

5495

UNIPROT ID:

O75688

Full Name:

protein phosphatase 1B (formerly 2C),
magnesium-dependent, beta isoform

Calculated MW:

479 aa, 53 kDa

Observed MW:

36, 53 kDa

Purification Method:

Antigen affinity purification

Recommended Dilutions:

WB 1:1000-1:4000

IHC 1:20-1:200

IF/ICC 1:50-1:500

Applications

Tested Applications:

IHC, IF/ICC, ELISA

Cited Applications:

IF, IP, Cell treatment

Species Specificity:

human, mouse

Cited Species:

human, mouse

Positive Controls:

WB : HeLa cells, MCF-7 cells

IHC : human breast cancer tissue, human skeletal
muscle tissue

IF/ICC : MCF-7 cells,

**Note-IHC: suggested antigen retrieval with
TE buffer pH 9.0; (*) Alternatively, antigen
retrieval may be performed with citrate
buffer pH 6.0**

Background Information

PPM1B is a member of the metal-dependent serine/threonine protein phosphatase (PPM) family with important regulatory functions in cellular signalling pathways (PMID: 18066953). PPM1B is also an important negative regulator of several stress signalling pathways and has been shown to negatively regulate the stress-activated p38 and JNK pathways by directly dephosphorylating upstream signalling proteins (PMID: 9824284). Moreover, PPM1B has also been shown to prevent cell death by negatively regulating necrotic cell death in a RIP3 dephosphorylation-dependent manner (PMID: 25751141). PPM1B can be detected as the WM of 36-55 kDa.

Notable Publications

Author	Pubmed ID	Journal	Application
Xin Li	28361952	Nat Commun	IP
Paula Bollmann	33597873	Front Pharmacol	
Katyayane Neopane	36543129	Cell Rep	IP, IF, Cell treatment

Storage

Storage:

Store at -20°C. Stable for one year after shipment.

Storage Buffer:

PBS with 0.02% sodium azide and 50% glycerol pH 7.3.

Aliquoting is unnecessary for -20°C storage

For technical support and original validation data for this product please contact:

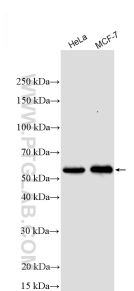
T: 4006900926

E: Proteintech-CN@ptglab.com

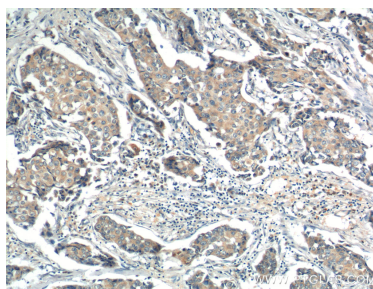
W: ptgcn.com

This product is exclusively available under Proteintech Group brand and is not available to purchase from any other manufacturer.

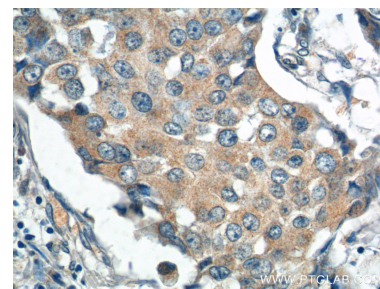
Selected Validation Data



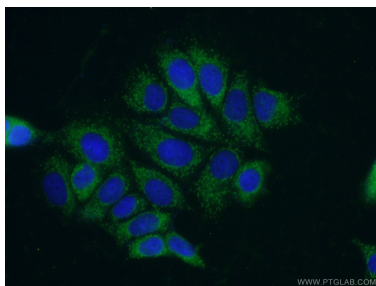
Various lysates were subjected to SDS PAGE followed by western blot with 13193-1-AP (PPM1B antibody) at dilution of 1:2000 incubated at room temperature for 1.5 hours.



Immunohistochemical analysis of paraffin-embedded human breast cancer tissue slide using 13193-1-AP (PPM1B Antibody) at dilution of 1:200 (under 10x lens).



Immunohistochemical analysis of paraffin-embedded human breast cancer tissue slide using 13193-1-AP (PPM1B Antibody) at dilution of 1:200 (under 40x lens).



Immunofluorescent analysis of (-20°C Ethanol) fixed MCF-7 cells using 13193-1-AP (PPM1B antibody) at dilution of 1:50 and Alexa Fluor 488-conjugated Goat Anti-Rabbit IgG(H+L).