

For Research Use Only

# KLF12 Polyclonal antibody

Catalog Number: 13156-1-AP

Featured Product

8 Publications



## Basic Information

**Catalog Number:**

13156-1-AP

**Size:**

450 µg/ml

**Source:**

Rabbit

**Isotype:**

IgG

**Immunogen Catalog Number:**

AG3788

**GenBank Accession Number:**

BC019680

**GeneID (NCBI):**

11278

**UNIPROT ID:**

Q9Y4X4

**Full Name:**

Kruppel-like factor 12

**Calculated MW:**

402 aa, 44 kDa

**Observed MW:**

65 kDa

**Purification Method:**

Antigen affinity purification

**Recommended Dilutions:**

WB 1:1000-1:4000

## Applications

**Tested Applications:**

WB, ELISA

**Cited Applications:**

WB, IHC, CHIP

**Species Specificity:**

human

**Cited Species:**

human, mouse

**Positive Controls:**

WB : HepG2 cells, human kidney tissue, Raji cells

## Background Information

KLF12, also named as AP2REP or HSPC122, is a 402 amino acid protein, which contains three C2H2-type zinc fingers and belongs to the Sp1 C2H2-type zinc-finger protein family. KLF12 localizes in the nucleus and confers strong transcriptional repression to the AP-2-alpha gene. KLF12 is a transcriptional silencer to the AP2-alpha gene, mediating positive and negative regulation of the AP2-A expression through a set of overlapping cis-regulatory promoters elements.

## Notable Publications

Author	Pubmed ID	Journal	Application
N Godin-Heymann	26455320	Oncogene	WB
Jinjin Wang	31417288	Onco Targets Ther	WB
Jing Zhou	32738388	J Ethnopharmacol	WB

## Storage

**Storage:**

Store at -20°C. Stable for one year after shipment.

**Storage Buffer:**

PBS with 0.02% sodium azide and 50% glycerol pH 7.3.

Aliquoting is unnecessary for -20°C storage

For technical support and original validation data for this product please contact:

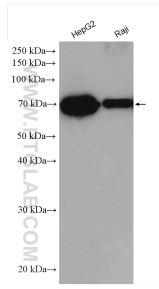
T: 4006900926

E: Proteintech-CN@ptglab.com

W: ptgcn.com

This product is exclusively available under Proteintech Group brand and is not available to purchase from any other manufacturer.

## Selected Validation Data



Various lysates were subjected to SDS PAGE followed by western blot with 13156-1-AP (KLF12 antibody) at dilution of 1:2000 incubated at room temperature for 1.5 hours.