

For Research Use Only

# PLS1 Polyclonal antibody

Catalog Number: 13143-1-AP



## Basic Information

<b>Catalog Number:</b> 13143-1-AP	<b>GenBank Accession Number:</b> BC031083	<b>Purification Method:</b> Antigen affinity purification
<b>Size:</b> 1000 µg/ml	<b>GeneID (NCBI):</b> 5357	<b>Recommended Dilutions:</b> WB 1:500-1:2000 IHC 1:200-1:800 IF 1:50-1:500
<b>Source:</b> Rabbit	<b>UNIPROT ID:</b> Q14651	
<b>Isotype:</b> IgG	<b>Full Name:</b> plastin 1 (I isoform)	
<b>Immunogen Catalog Number:</b> AG3532	<b>Calculated MW:</b> 629 aa, 70 kDa	
	<b>Observed MW:</b> 70 kDa	

## Applications

**Tested Applications:**  
IF/ICC, IHC, WB, ELISA

**Species Specificity:**  
human, mouse

**Note-IHC: suggested antigen retrieval with TE buffer pH 9.0; (\*) Alternatively, antigen retrieval may be performed with citrate buffer pH 6.0**

**Positive Controls:**

**WB:** A549 cells, mouse colon tissue, mouse kidney tissue

**IHC:** human kidney tissue,

**IF:** A549 cells,

## Background Information

PLS1 also known as Fimbrin, Plastin 1, is an actin-binding protein in the absence of calcium. In the inner ear, PLS1 is required for stereocilia formation. PLS1 Mediates liquid packing of actin filaments that is necessary for stereocilia to grow to their proper dimensions. PLS1 is specifically expressed at high levels in the small intestine, colon, and kidney; relatively expressed at lower levels in the lung and stomach(PMID: 8139549). PLS1 is required for normal hearing in humans and mice. Mutations in PLS1, encoding fimbrin, cause autosomal dominant nonsyndromic hearing loss(NSHL)(PMID: 31397523).

## Storage

**Storage:**

Store at -20°C. Stable for one year after shipment.

**Storage Buffer:**

PBS with 0.02% sodium azide and 50% glycerol pH 7.3.

Aliquoting is unnecessary for -20°C storage

For technical support and original validation data for this product please contact:

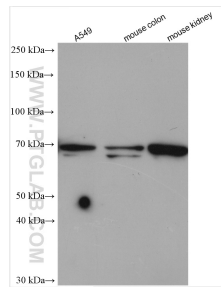
T: 4006900926

E: Proteintech-CN@ptglab.com

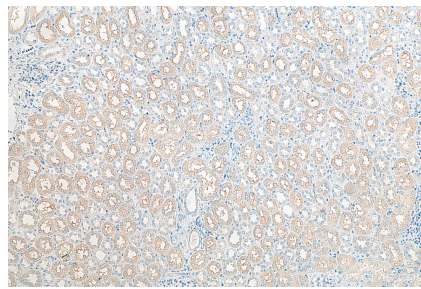
W: ptgcn.com

**This product is exclusively available under Proteintech Group brand and is not available to purchase from any other manufacturer.**

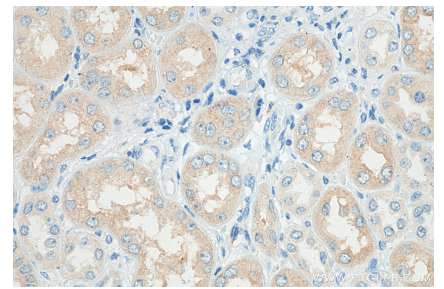
## Selected Validation Data



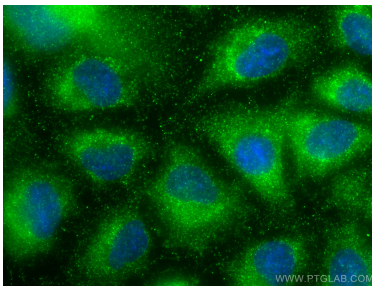
Various lysates were subjected to SDS PAGE followed by western blot with 13143-1-AP (PLS1 antibody) at dilution of 1:1000 incubated at room temperature for 1.5 hours.



Immunohistochemical analysis of paraffin-embedded human kidney tissue slide using 13143-1-AP (PLS1 antibody) at dilution of 1:400 (under 10x lens). Heat mediated antigen retrieval with Tris-EDTA buffer (pH 9.0).



Immunohistochemical analysis of paraffin-embedded human kidney tissue slide using 13143-1-AP (PLS1 antibody) at dilution of 1:400 (under 40x lens). Heat mediated antigen retrieval with Tris-EDTA buffer (pH 9.0).



Immunofluorescent analysis of (-20°C Methanol) fixed A549 cells using PLS1 antibody (13143-1-AP) at dilution of 1:200 and CoraLite®488-Conjugated AffiniPure Goat Anti-Rabbit IgG(H+L).