

For Research Use Only

# FGD1 Polyclonal antibody

Catalog Number: 13141-1-AP



## Basic Information

**Catalog Number:**

13141-1-AP

**Size:**

260 ug/ml

**Source:**

Rabbit

**Isotype:**

IgG

**Immunogen Catalog Number:**

AG3861

**GenBank Accession Number:**

BC034530

**GeneID (NCBI):**

2245

**UNIPROT ID:**

P98174

**Full Name:**

FYVE, RhoGEF and PH domain containing 1

**Calculated MW:**

901 aa, 91 kDa

**Observed MW:**

130 kDa

**Purification Method:**

Antigen affinity purification

**Recommended Dilutions:**

WB 1:500-1:1000

IP 0.5-4.0 ug for 1.0-3.0 mg of total protein lysate

IHC 1:50-1:500

IF/ICC 1:50-1:500

## Applications

**Tested Applications:**

WB, IHC, IF/ICC, IP, ELISA

**Species Specificity:**

human, mouse, rat

**Note-IHC: suggested antigen retrieval with TE buffer pH 9.0; (\*) Alternatively, antigen retrieval may be performed with citrate buffer pH 6.0**

**Positive Controls:**

WB : BxPC-3 cells, SK-N-SH cells, U2OS cells

IP : SK-N-SH cells,

IHC : mouse kidney tissue,

IF/ICC : U2OS cells,

## Background Information

FGD1 is also named as FGDY (Faciogenital dysplasia 1 protein), ZFYVE3 (Zinc finger FYVE domain-containing protein 3), Rho/Rac guanine nucleotide exchange factor FGD1 (Rho/Rac GEF), FYVE, RhoGEF and PH domain-containing protein 1. FGD1 activates CDC42, a member of the Ras-like family of Rho- and Rac proteins, by exchanging bound GDP for free GTP. And FGD1 plays a role in regulating the actin cytoskeleton and cell shape. (PMID: 8969170). FGD1 was markedly overexpressed and might be a prognostic biomarker in osteosarcoma patient specimens (PMID: 32194840). FGD1 is specific for the Rho GTPase cell division cycle 42 (CDC42) (PMID: 22854039).

## Storage

**Storage:**

Store at -20°C. Stable for one year after shipment.

**Storage Buffer:**

PBS with 0.02% sodium azide and 50% glycerol pH 7.3.

Aliquoting is unnecessary for -20°C storage

For technical support and original validation data for this product please contact:

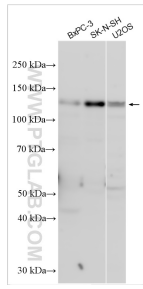
T: 4006900926

E: Proteintech-CN@ptglab.com

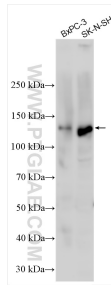
W: ptgcn.com

**This product is exclusively available under Proteintech Group brand and is not available to purchase from any other manufacturer.**

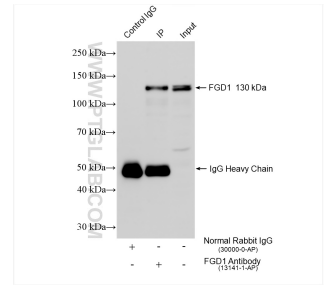
## Selected Validation Data



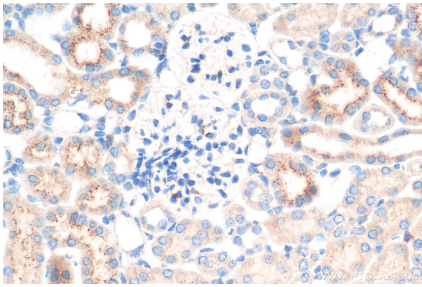
Various lysates were subjected to SDS PAGE followed by western blot with 13141-1-AP (FGD1 antibody) at dilution of 1:500 incubated at room temperature for 1.5 hours.



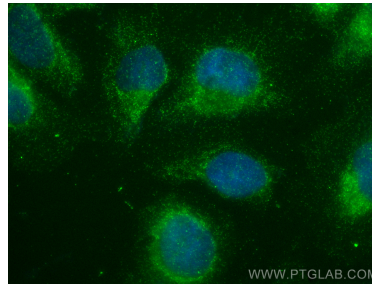
Various lysates were subjected to SDS PAGE followed by western blot with 13141-1-AP (FGD1 antibody) at dilution of 1:300 incubated at room temperature for 1.5 hours.



IP result of anti-FGD1 (IP:13141-1-AP, 4ug; Detection:13141-1-AP 1:600) with SK-N-SH cells lysate 1160 ug.



Immunohistochemical analysis of paraffin-embedded mouse kidney tissue slide using 13141-1-AP (FGD1 antibody) at dilution of 1:200 (under 40x lens). Heat mediated antigen retrieval with Tris-EDTA buffer (pH 9.0).



Immunofluorescent analysis of (-20°C Ethanol) fixed U2OS cells using FGD1 antibody (13141-1-AP) at dilution of 1:200 and Multi-rAb Coralite® Plus 488-Goat Anti-Rabbit Recombinant Secondary Antibody (H+L) (RGAR002).